

Exploring Alternate Definitions of Environmental Justice for SCAQMD's 2016 Socioeconomic Report

September 27, 2016

INDUSTRIAL ECONOMICS, INCORPORATED

Prepared by:

Industrial Economics, Incorporated (IEc)
2067 Massachusetts Avenue
Cambridge, MA 02140
617/354-0074

SCAQMD EJ Definition

- An area with:
 - At least 10% of the population below the federal poverty line and
 - An annual mean $PM_{2.5}$ concentration $> 11.1 \mu\text{g}/\text{m}^3$ per year or a toxic cancer risk > 894 in a million (Top 15th percentile $PM_{2.5}$ and toxic cancer risk values; updated over time)
- Currently used for grant distribution purposes
- We have created an alternative set of definitions for use in sensitivity analysis within 2016 Socioeconomic Review

Considerations

- An alternative definition of EJ:
 - Should be “fit for purpose” - i.e. should identify and characterize disadvantaged communities to best aid SCAQMD in analyzing differential impacts of proposed AQMP;
 - Should prioritize SCAQMD-generated data when possible;
 - Must include air quality measures;
 - Should include relevant socioeconomic and sociodemographic data; and
 - May consider race and ethnicity and other non-air quality environmental indicators.

CalEnviroScreen2.0 Method for SCAQMD

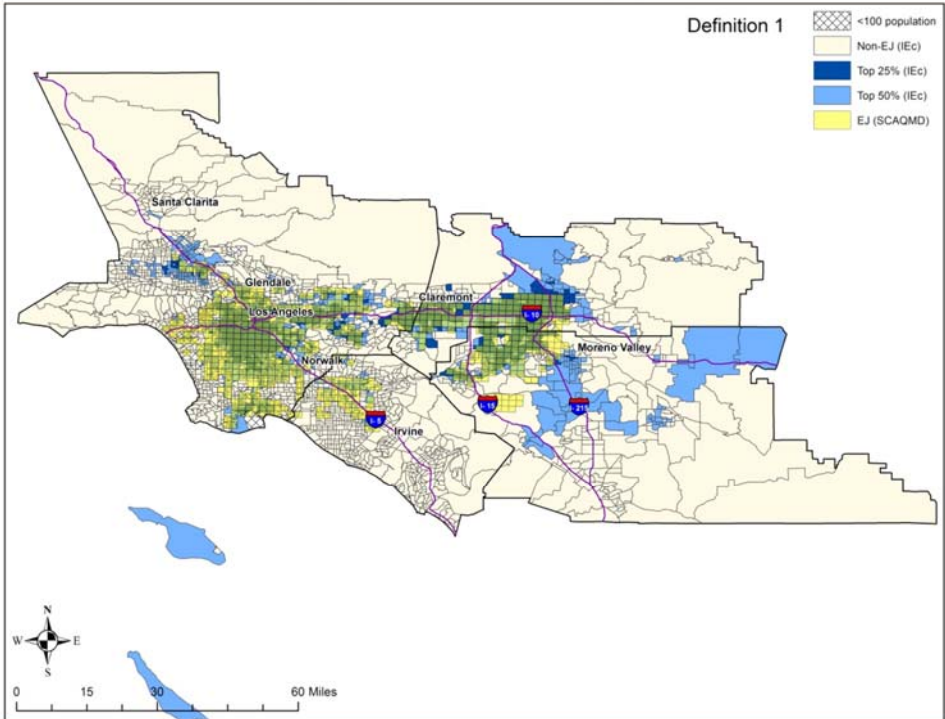
- For each indicator, we use raw data from CalEnviroScreen (CES) for each SCAB census tract to assign a percentile ranking based on the mean value, relative to SCAB.
- SCAQMD cancer risk estimates supplement CES data.
- We assign half-weights to environmental indicators of potential hazard.
- Environmental burden indicators and demographic indicators are averaged separately and given a 1-10 score, then multiplied together for an overall percentile in SCAB.
- We limit our EJ assignments to either the top 25% or top 50% of census tracts.

Recommended Alternative EJ Definitions

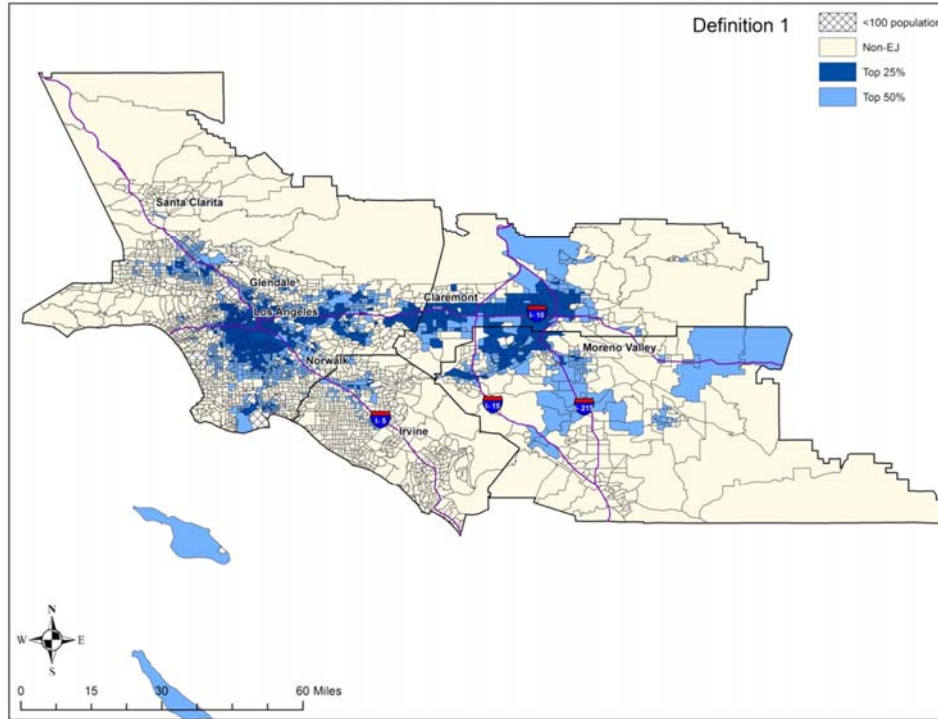
ALTERNATIVE DEFINITION	DEMOGRAPHIC INDICATORS		ENVIRONMENTAL INDICATORS	
	Income	Other Sociodemographic	Air Quality	Other Environmental Burdens
1	Poverty status		PM _{2.5} , toxic cancer risk, ozone	
2	Poverty status	Age, asthma, education, linguistic isolation, low birth weight, unemployment	PM _{2.5} , toxic cancer risk, ozone	
2a	Definition 2, plus race and ethnicity			
3	Poverty status	Age, asthma, education, linguistic isolation, low birth weight, unemployment	PM _{2.5} , toxic cancer risk, ozone	Drinking water, pesticides, toxic releases, traffic, <i>cleanup sites, groundwater threats, hazardous waste, impaired water bodies, solid waste*</i>
3a	Definition 3, plus race and ethnicity			

*Indicators in italics are given half-weight in the analysis

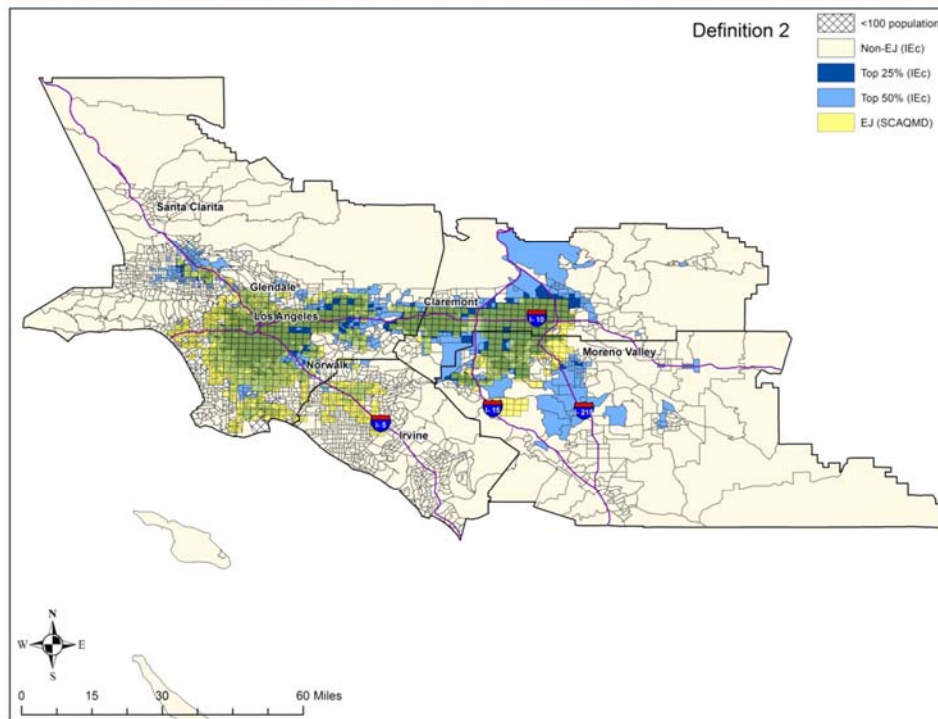
Alternative Definition 1: Income, Air Quality



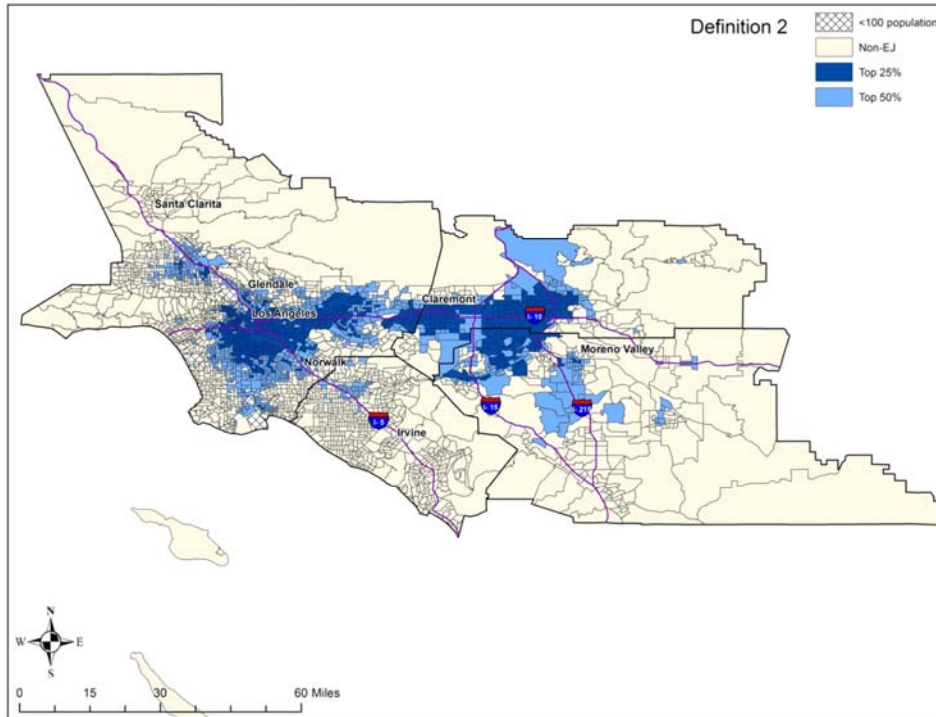
Alternative Definition 1: Income, Air Quality



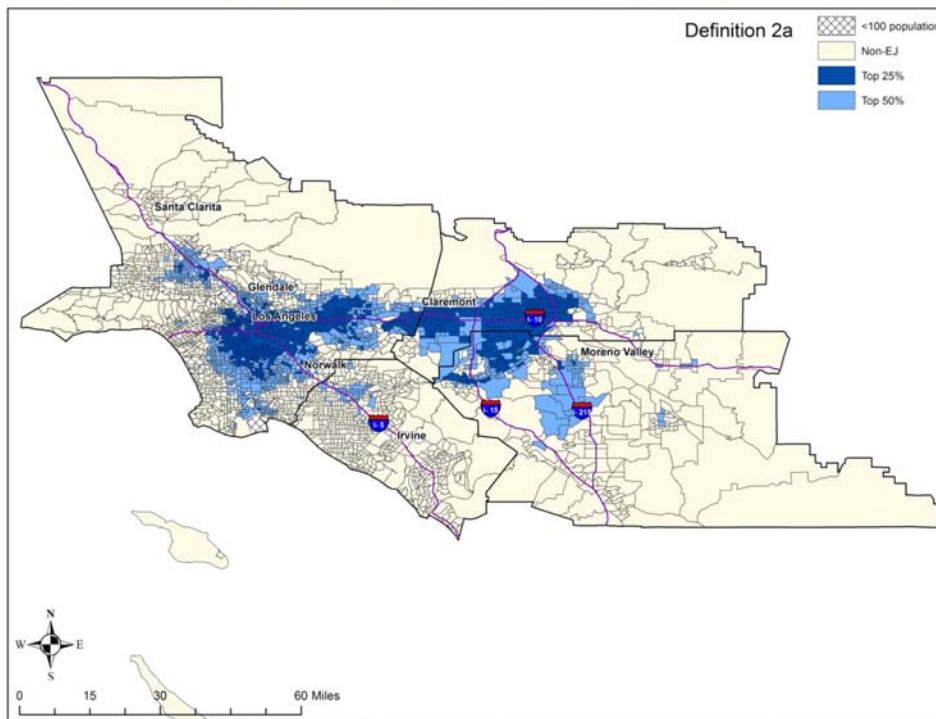
Alternative Definition 2: Income, Air Quality, Sociodemographics



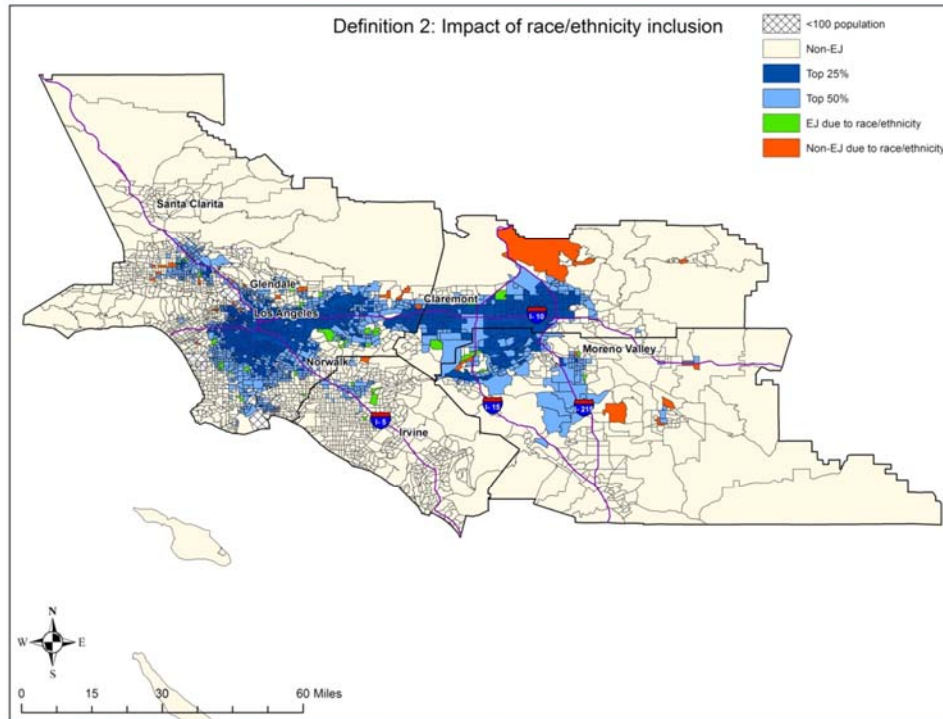
Alternative Definition 2: Income, Air Quality, Sociodemographics



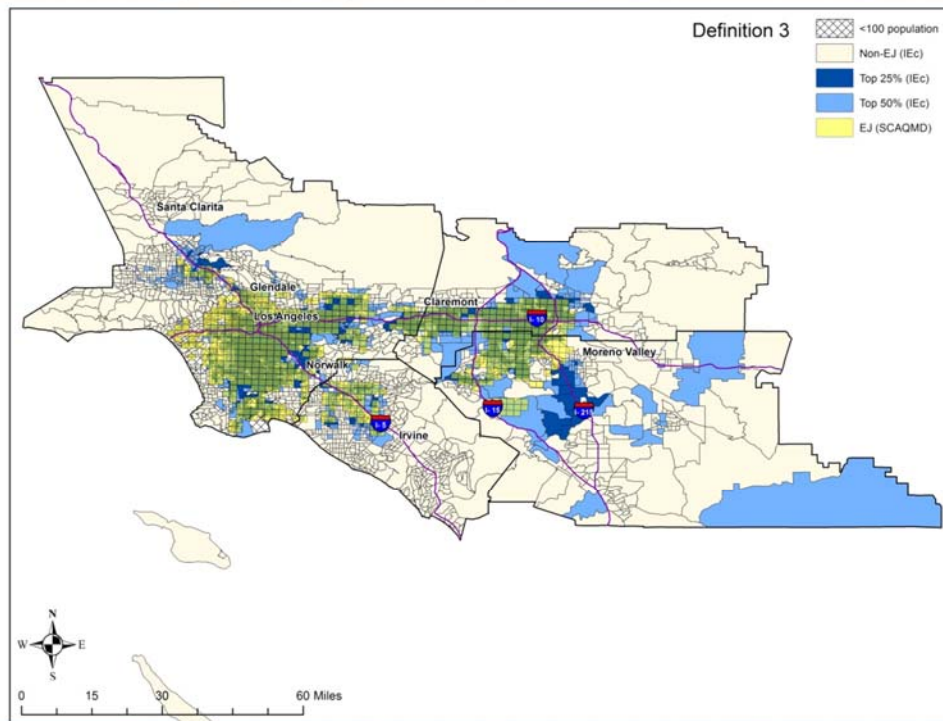
Alternative Definition 2A: Income, Air Quality, Sociodemographics, Race/Ethnicity



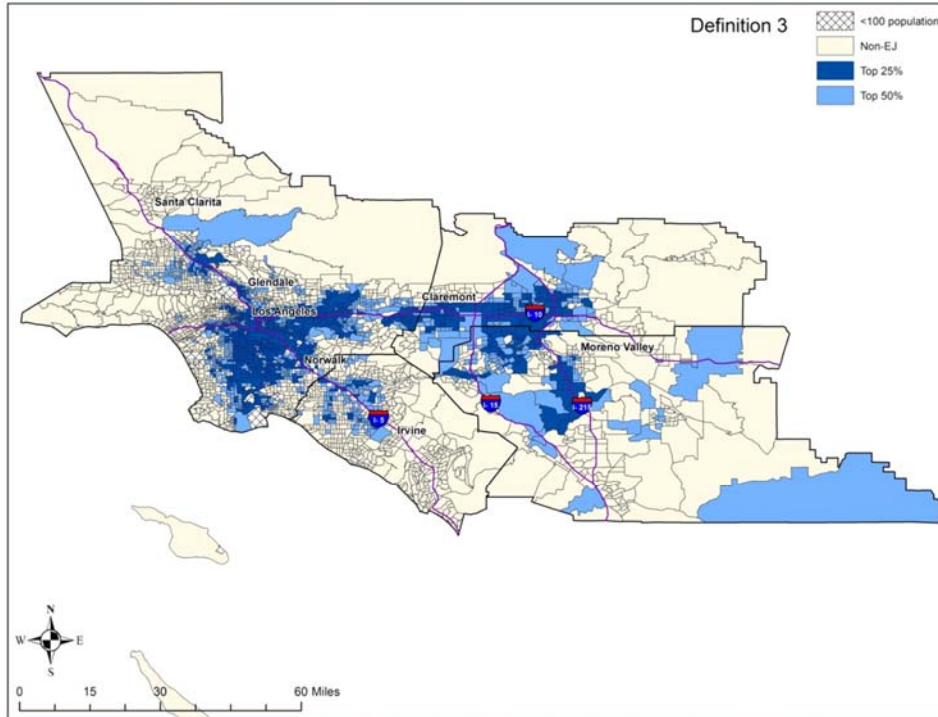
Comparison of Definitions 2 and 2A



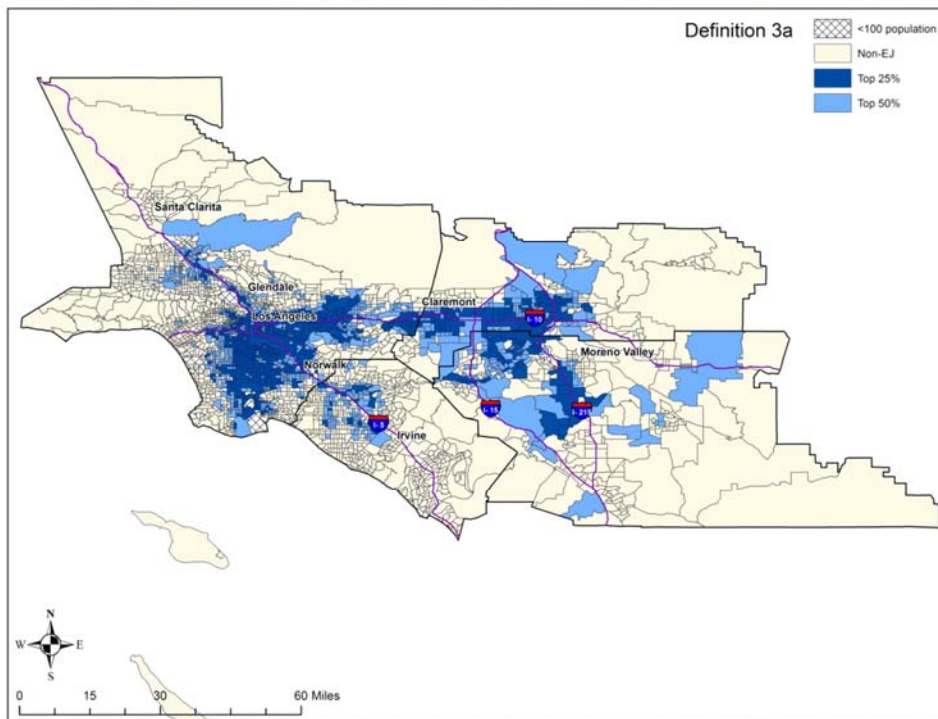
Alternative Definition 3: Income, Air Quality, Sociodemographics, Environmental Burden



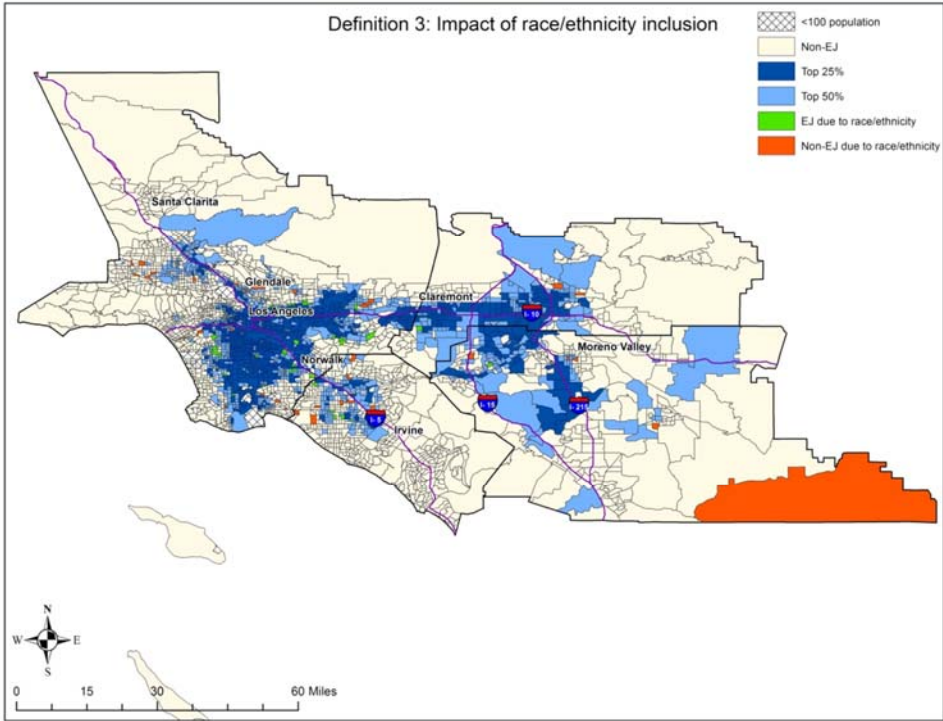
Alternative Definition 3: Income, Air Quality, Sociodemographics, Environmental Burden



Alternative Definition 3A: Income, Air Quality, Sociodemographics, Environmental Burden, Race/Ethnicity



Comparison of Definitions 3 and 3A



Comparison of EJ Definitions

	SCAQMD DEFINITION	DEFINITION 1		DEFINITION 2		DEFINITION 3	
		TOP 25%	TOP 50%	TOP 25%	TOP 50%	TOP 25%	TOP 50%
Los Angeles	74.4%	72.1%	70.6%	72.0%	72.5%	75.2%	68.1%
Orange	10.0%	1.0%	5.7%	0.1%	3.9%	4.8%	11.2%
Riverside	5.9%	7.2%	10.0%	7.1%	9.5%	6.6%	8.1%
San Bernardino	9.8%	19.7%	13.7%	20.8%	14.1%	13.5%	12.5%
Total SCAB	100%	100%	100%	100%	100%	100%	100%

Distribution of EJ populations for each proposed definition by county

Comparison of EJ Definitions

	SCAQMD DEFINITION	DEFINITION 1		DEFINITION 2		DEFINITION 3	
		TOP 25%	TOP 50%	TOP 25%	TOP 50%	TOP 25%	TOP 50%
Los Angeles	58.7%	28.3%	57.4%	28.7%	59.3%	31.3%	56.9%
Orange	24.7%	1.3%	14.5%	0.1%	10.0%	6.2%	29.5%
Riverside	25.2%	15.2%	44.1%	15.4%	42.0%	14.9%	36.6%
San Bernardino	47.6%	47.9%	69.0%	51.2%	71.5%	34.6%	64.8%
All Counties in SCAB	47.4%	23.6%	48.9%	24.0%	49.1%	25.0%	50.2%
Note: Values by definition do not add up to 100%, as this table depicts the percent of county population affected.							

Proportion of county population living in an EJ community by proposed EJ definition

Comparison of EJ Definitions

NON-EJ TO TOP 50%	NON-EJ TO TOP 25%	TOP 50% TO TOP 25%	TOP 50% TO NON-EJ	TOP 25% TO NON-EJ	TOP 25% TO TOP 50%
Census Tracts					
40 (1.2%)	0	27 (0.8%)	40 (1.2%)	0	27 (0.8%)
Population					
214,302 (1.4%)	0	116,533 (0.7%)	153,968 (1.0%)	0	122,710 (0.8%)

Change in populations defined as EJ between Definition 2 and Definition 2A

Comparison of EJ Definitions

NON-EJ TO TOP 50%	NON-EJ TO TOP 25%	TOP 50% TO TOP 25%	TOP 50% TO NON-EJ	TOP 25% TO NON-EJ	TOP 25% TO TOP 50%
Census Tracts					
40 (1.2%)	0	31 (0.9%)	40 (1.2%)	0	31 (0.9%)
Population					
187,295 (1.2%)	0	131,825 (0.8%)	178,424 (1.1%)	0	125,079 (0.8%)

Change in populations defined as EJ between Definition 3 and Definition 3A

Sensitivity Analyses

- Each of these definition types can be used as a sensitivity analysis to compare with EJ areas as defined by SCAQMD.
- Alternative definitions were designed to include alternative environmental and demographic indicators incrementally.
- Alternative definitions were built from SCAQMD's current grant distribution definition of EJ for ease of sensitivity analysis comparison.
- Identification of EJ areas based on these alternative definitions were calculated using a commonly used methodology, CalEnviroScreen2.0.

Conclusions

- Inclusion of Race and Ethnicity as one of seven sociodemographic indicators does not change the EJ status of > 98% of census tracts.
- Inclusion of the Race and Ethnicity indicator keeps EJ-defined areas closer to the urban core by excluding some large rural census tracts.

The logo consists of the letters 'IEc' in a white, sans-serif font. The 'I' and 'E' are uppercase, and the 'c' is lowercase. The background is a dark blue with a repeating geometric pattern of small, interconnected shapes.

INDUSTRIAL ECONOMICS, INCORPORATED

617.354.0074