

Andreas Beyersdorf
CSUSB

comments on:

Technical Advisory Group Meeting
July 31, 2020



TAG July 2020 Meeting

- Dr. Sang-Mi Lee & Dr. Marc Carreras Sospedra
- Updates on Emissions Inventories and Modeling
- Slides available at:

<https://www.aqmd.gov/nav/about/initiatives/community-efforts/environmental-justice/ab617-134/technical-advisory-group>

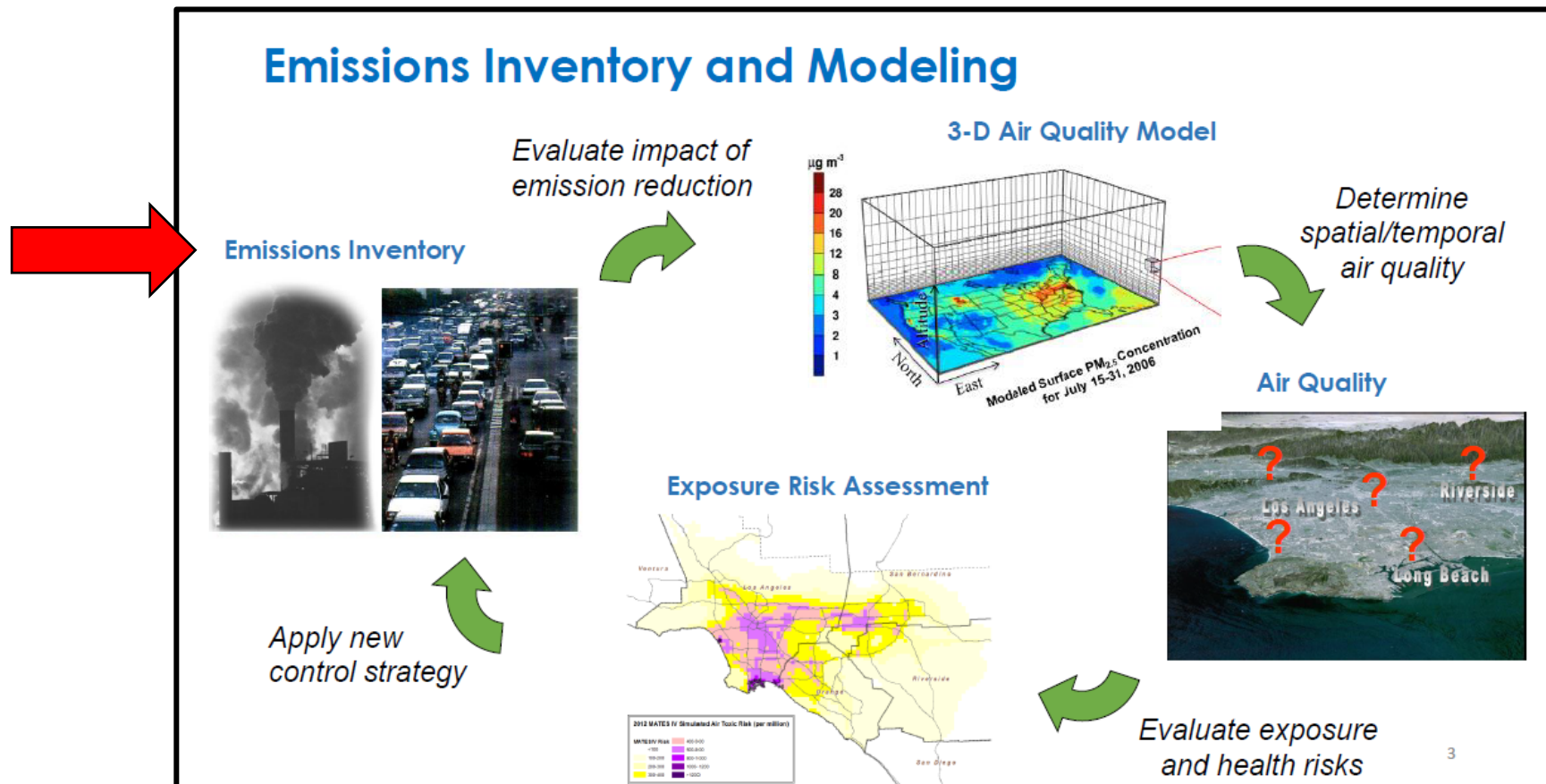


Figure from
TAG notes

TAG July 2020 Meeting

- Updated On-Road Mobile Emissions Update (EMFAC)
 - Old = 2014
 - New = 2017

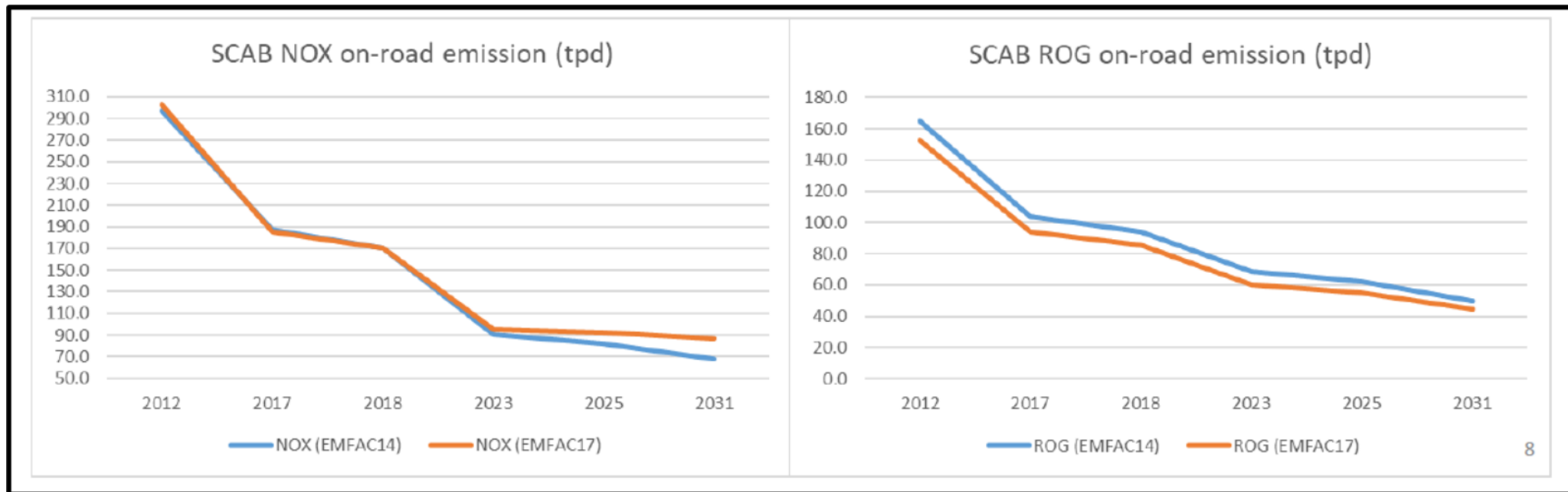


Figure from
TAG notes

TAG July 2020 Meeting

- Updated On-Road Mobile Emissions Update (EMFAC)
 - Old = 2014
 - New = 2017

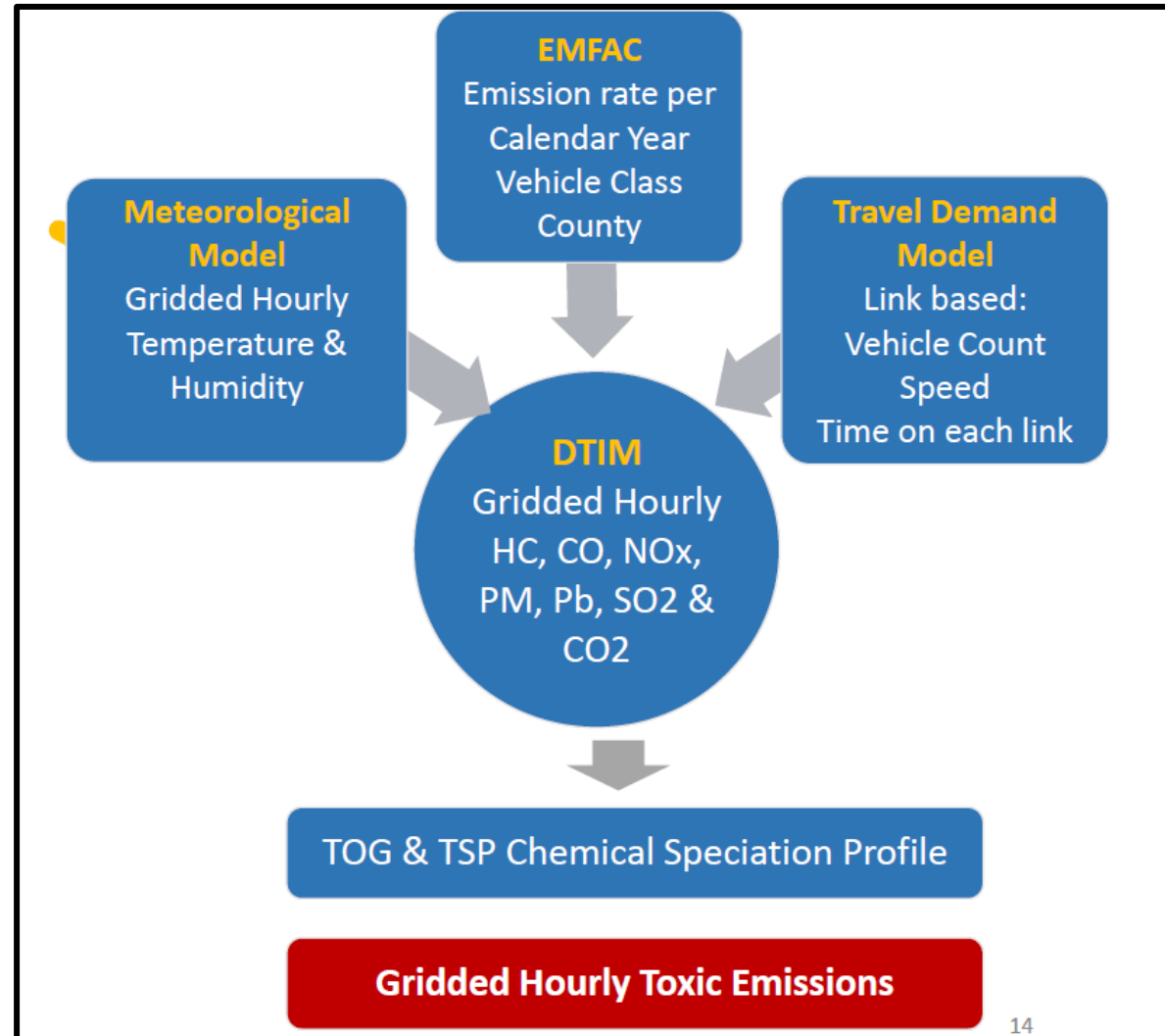
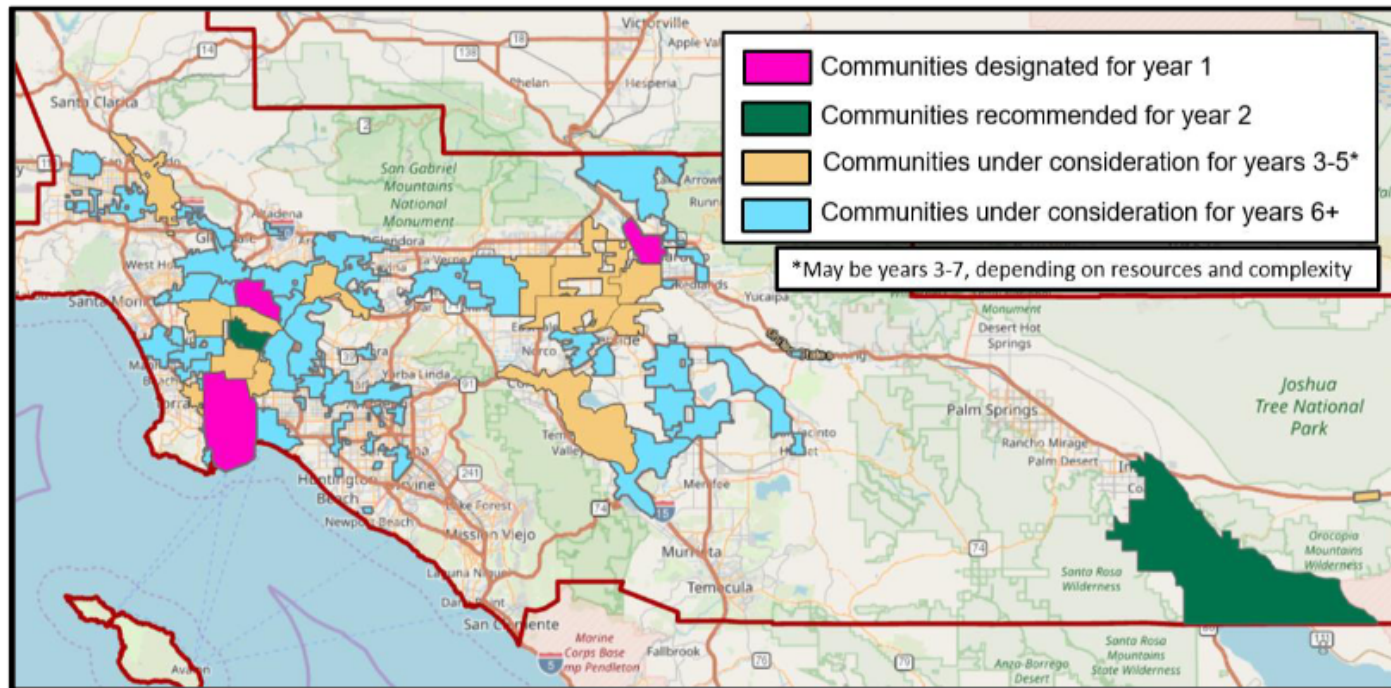


Figure from
TAG notes

TAG July 2020 Meeting

- MATES V – 2018 emissions
- 2022 AQMP (Air Quality Modeling Platform)
- 2019-Designated Communities source attribution for 2018, 2025 & 2030
 - **Southeast LA (Bell Gardens, Huntington Park, Cudahy & South Gate)**
 - **East Coachella Valley (Indio & Coachella)**



TAG July 2020 Meeting

- 2019-Designated Communities Toxic Air Contaminants (TACs)
 - **Diesel Particulate Matter (DPM) is biggest contributor**
 - **Southeast LA: highest levels**

Southeast LA

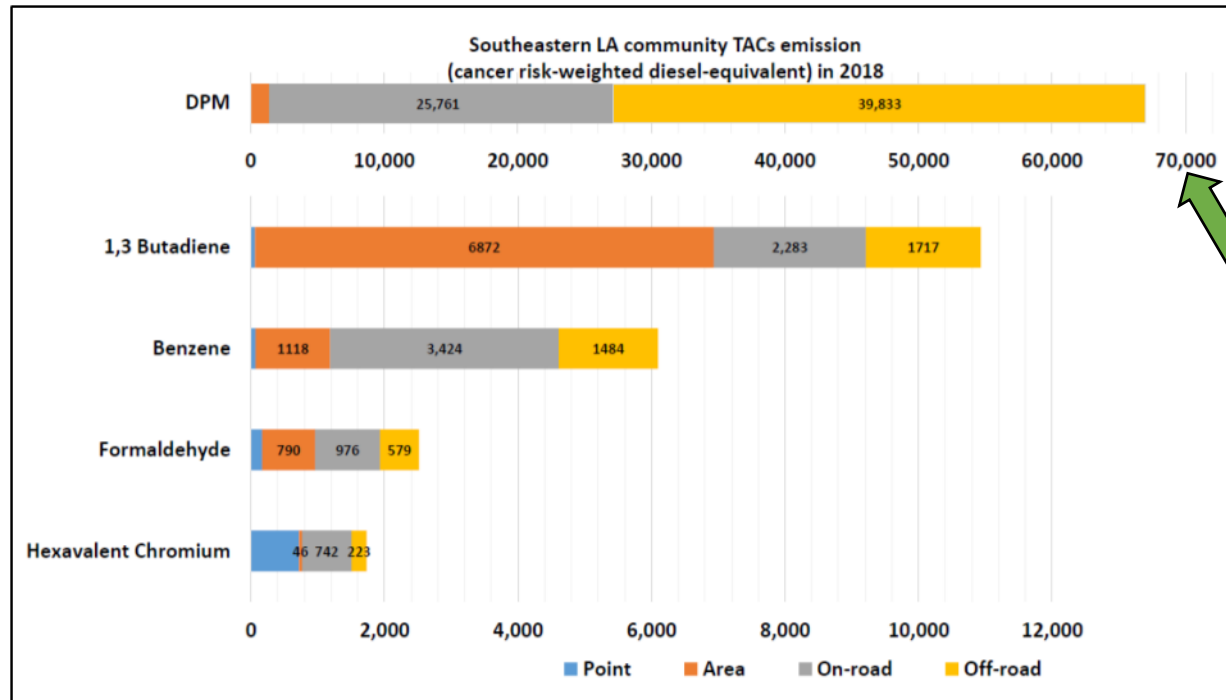


Figure from TAG notes

Eastern Coachella Valley

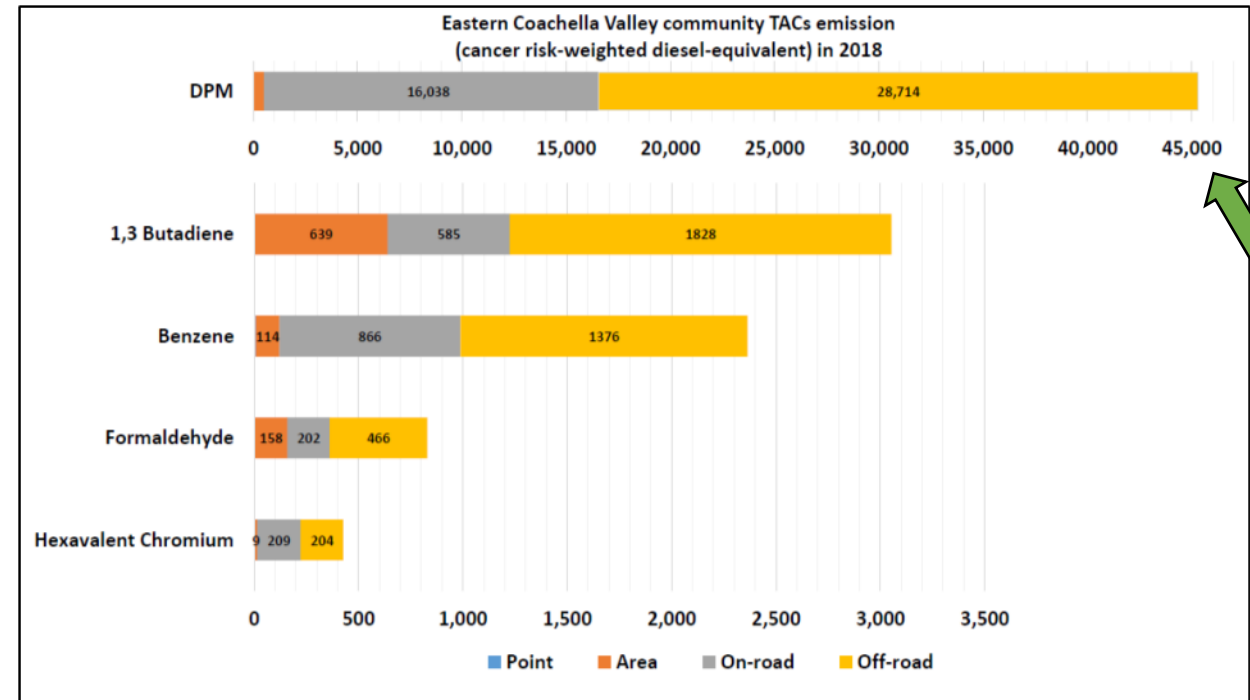
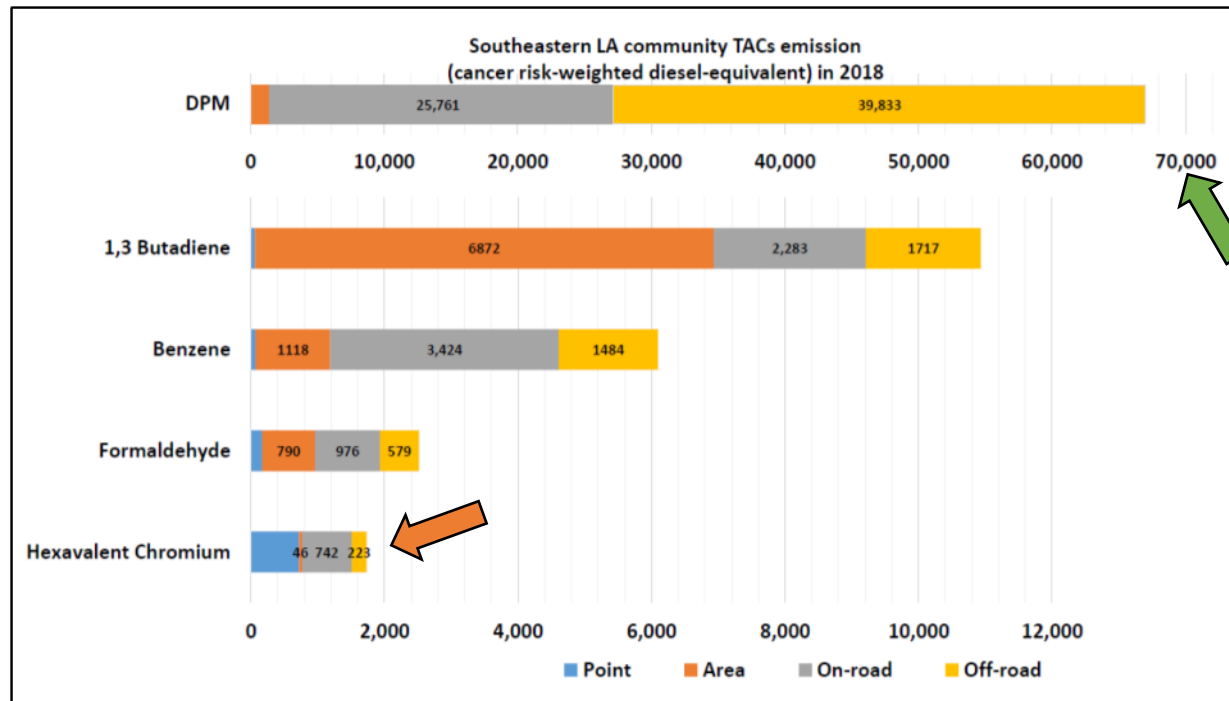


Figure from TAG notes

TAG July 2020 Meeting

- 2019-Designated Communities Toxic Air Contaminants (TACs)
 - Diesel Particulate Matter (DPM) is biggest contributor
 - **Southeast LA: highest levels**
 - **San Bernardino: high Hexavalent Chromium (Cr⁶⁺)**

Southeast LA



San Bernardino / Muscoy

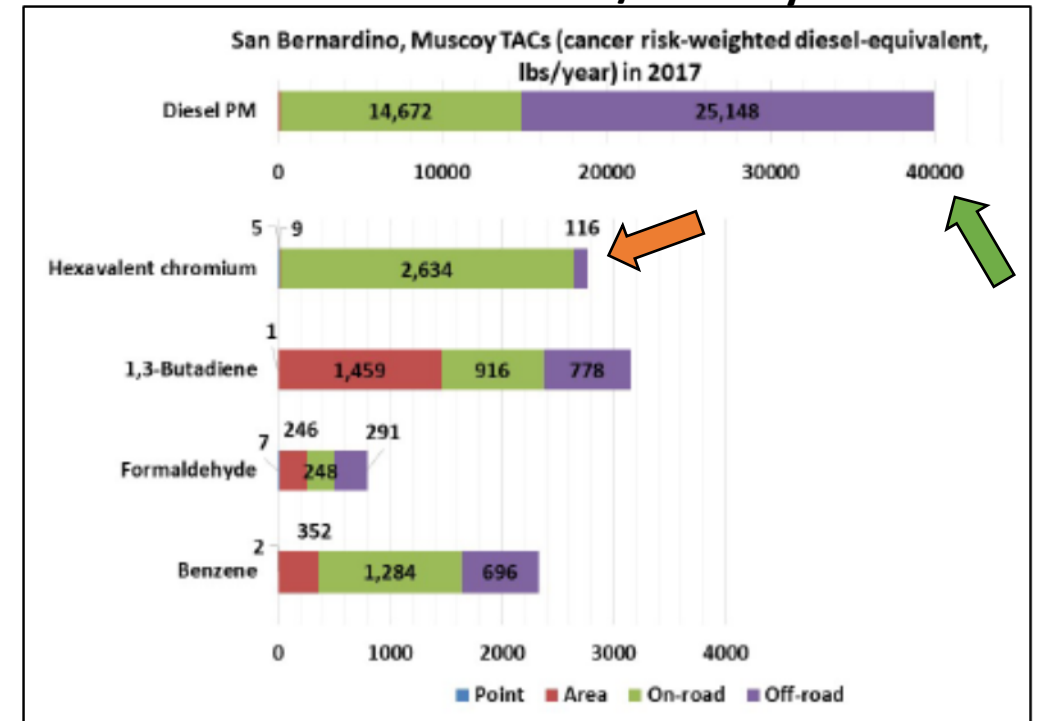


Figure from TAG notes

Figure from CERP

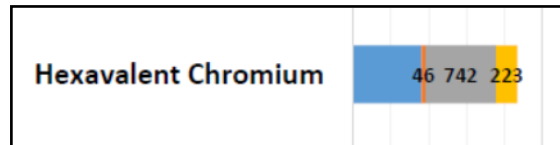
TAG July 2020 Meeting

- 2019-Designated Communities Toxic Air Contaminants (TACs)
 - **San Bernardino: high Hexavalent Chromium (Cr⁶⁺)**
 - SELA: ~1,700 lbs/yr
 - 44% from on-road (also chemical industry)
 - ECV: 422 lbs/yr
 - 49% from on-road (also off-road)
 - SB: 2,764 lbs/yr
 - 95% from on-road (brake-wear)

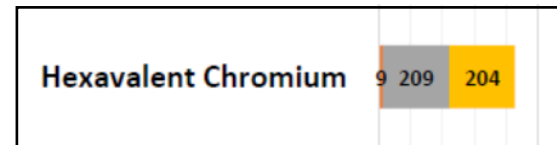


Chrome Plating
(from Wikipedia)

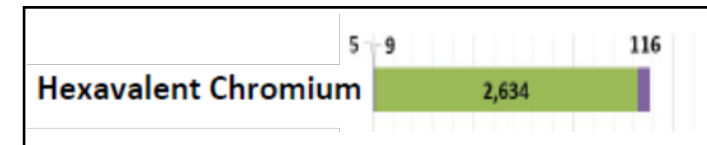
Southeast LA



Eastern Coachella Valley



San Bernardino / Muscoy



Southeast LA & Coachella data from TAG notes

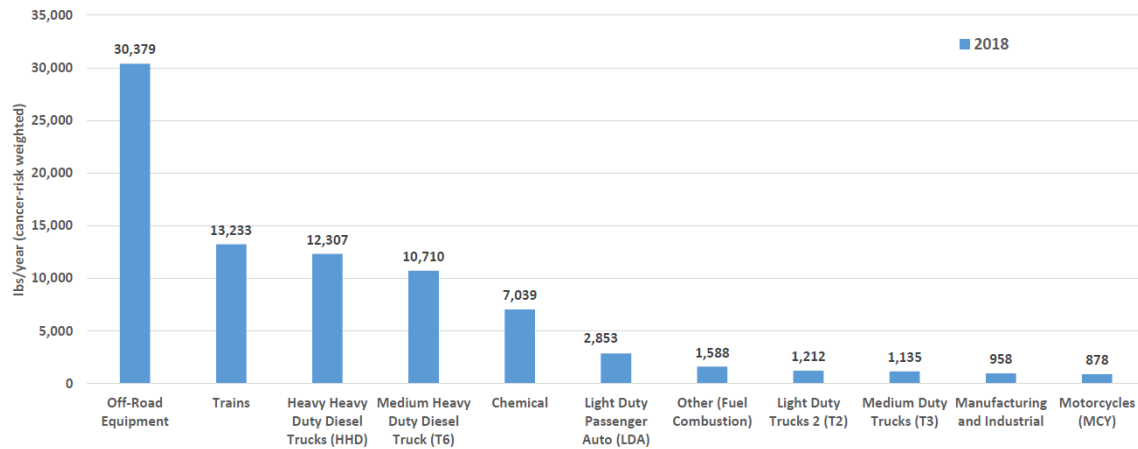
San Bernardino data from CERP

Why so high & can it be reduced?

TAG July 2020 Meeting

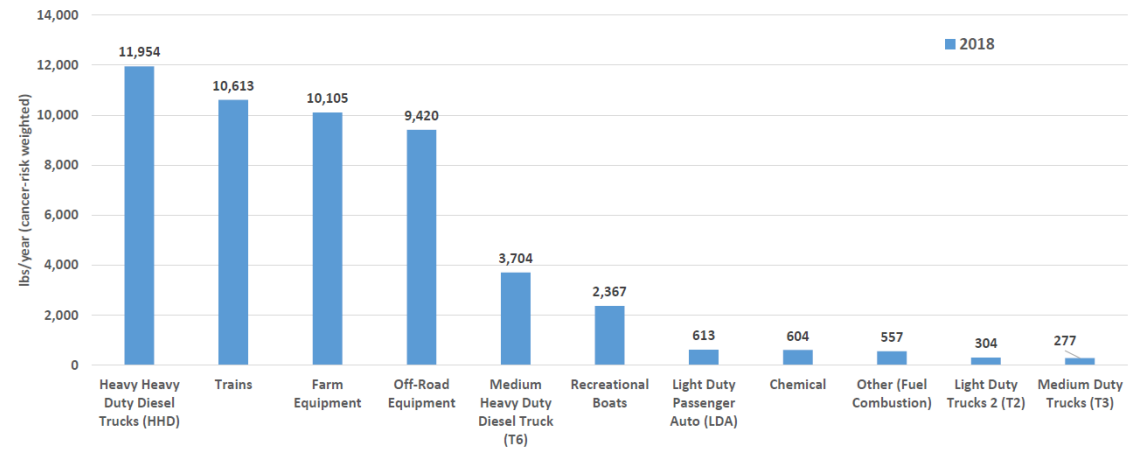
- 2019-Designated Communities
 - Sources of TACs

Top 10 Sources of TACs in Southeast Los Angeles emissions study area



*Emissions represent all TACs aggregated and weighted with cancer-risk

Top 10 Sources of TACs in Eastern Coachella Valley



*Emissions represent all TACs aggregated and weighted with cancer-risk

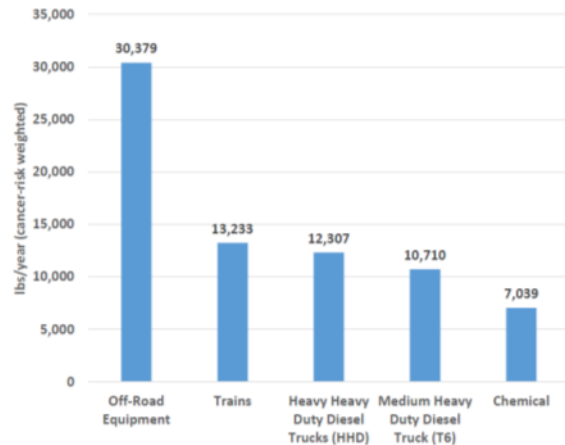
Figures from TAG notes

TAG July 2020 Meeting

- 2019-Designated Communities
 - Top 5 Sources of TACs

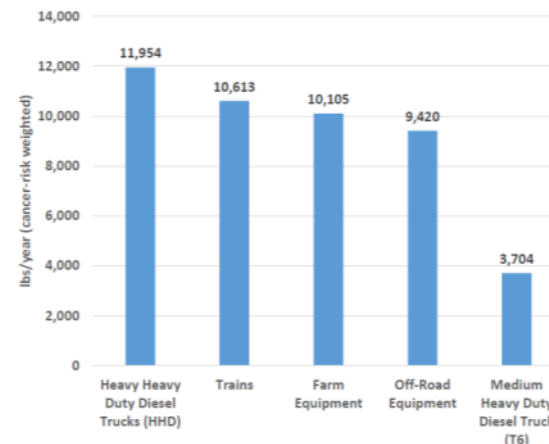
Southeast LA

- 1) Off-Road Equipment
- 2) Trains
- 3) Heavy Duty Diesel Trucks
- 4) Medium Duty Diesel Trucks
- 5) Chemical



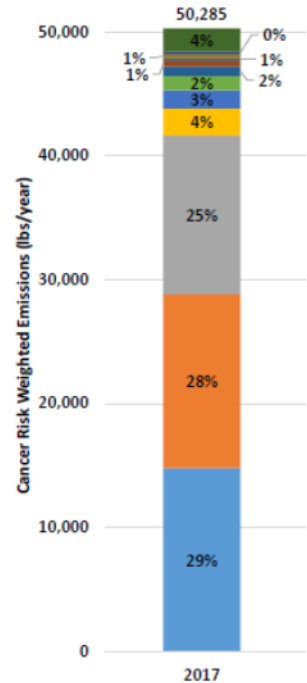
Eastern Coachella Valley

- 1) Heavy Duty Diesel Trucks
- 2) Trains
- 3) Farm Equipment
- 4) Off-Road Equipment
- 5) Medium Duty Diesel Trucks



San Bernardino / Muscoy

- 1) Heavy Duty Diesel Trucks
- 2) Off-Road Equipment
- 3) Trains
- 4) Light Duty Passenger
- 5) Chemical



Southeast LA & Coachella data from TAG notes
San Bernardino data from CERP

TAG July 2020 Meeting

- Dr. Sang-Mi Lee & Dr. Marc Carreras Sospedra
- Updates on Emissions Inventories and Modeling
- Question:
 - **Why does San Bernardino / Muscoy have such high hexavalent chromium from on-road sources?**
 - lower speeds = more braking?
 - **What can be done to reduce hexavalent chromium emissions from brakes?**
 - CERP Future Expectations:
 - Increase in chromium emissions from brake wear
 - Decrease in DPM emissions
 - **Where are the cookies?**

