

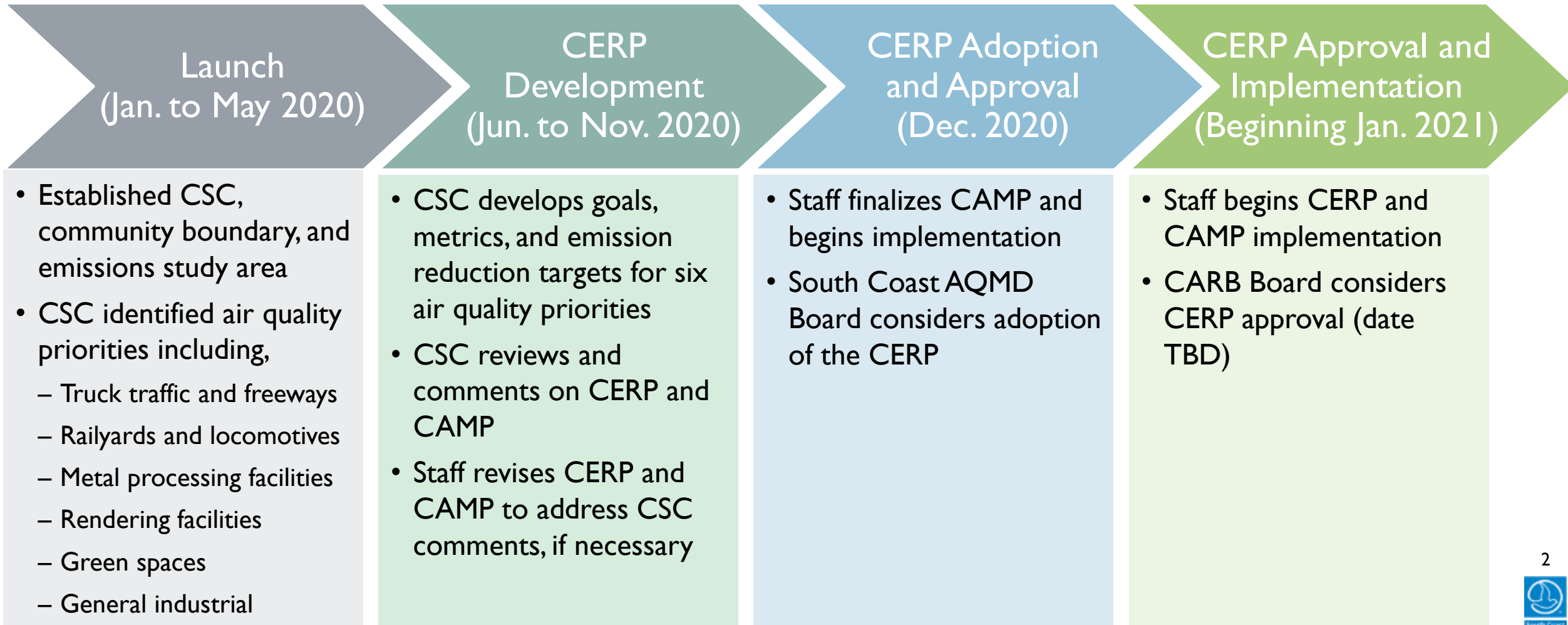
# DRAFT CERP AND CAMP DISCUSSION

SOUTHEAST LOS ANGELES CSC MEETING #8  
OCTOBER 29<sup>TH</sup>, 2020



Dianne Sanchez, Ph.D. - Air Quality Specialist

# COMMUNITY EMISSION REDUCTION PLAN (CERP) AND COMMUNITY AIR MONITORING PLAN (CAMP) – DEVELOPMENT PROCESS



# CERP AND CAMP TIMELINE

- **Truck Traffic and Freeways**
- **Rail Yards and Locomotives**
- **Technical Advisory Group (TAG) Meeting**

- **Rendering Facilities**
- **General Industrial Facilities**

- **Present Draft CERP to Stationary Source Committee**

- **Begin CERP Implementation**

July  
2020

August  
2020

September  
2020

October  
2020

November  
2020

December  
2020

January  
2021

- **Metal Processing Facilities**
- **Green Spaces**

- **Overview of updated CERP and CAMP development process**
- **Overview of Potential Draft CERP and CAMP Actions**
- **Release Discussion Draft CERP (end of October)**

- **Present CERP to Governing Board**
- **Finalize CAMP and begin implementation**

# DISCUSSION

COMMENTS AND QUESTIONS?



# CERP CONTENTS



# REVIEW OF AIR QUALITY PRIORITIES AND WORKSHOP COMMENTS

**Reduce emissions and address concerns about:**



**Truck traffic  
and  
freeways**



**Railyards and  
locomotives**



**Rendering  
facilities**



**Green spaces**



**Metal  
processing  
facilities**



**General  
industrial  
facilities**

# CERP TABLE OF CONTENTS

## Main Chapters

1 Introduction

2 Community Outreach

3a Community Profile

3b Emissions Inventory/Source Attribution

4 Enforcement Plan

5 Actions to Reduce Air Pollution Emissions or Exposure

6 Air Monitoring Summary

- The Draft CERP will be available online beginning Wednesday, October 27, 2020 at <https://www.aqmd.gov/nav/about/initiatives/community-efforts/environmental-justice/ab617-134/southeast-los-angeles>
- Please submit your comments on the Draft CERP by 5:00 PM, Friday November 6<sup>th</sup>

# CERP ACTIONS TO ADDRESS TRUCKS AND FREEWAYS



## Goal: Reduce Emissions from Truck Traffic and Freeways

### Actions

- A. CARB would work with local municipalities and law enforcement to help establish truck routes, local no idling ordinances, parking zoning to move truck parking from local neighborhoods to an approved parking location, and greening to help separate the community from idling within the community
- B. CARB would work with local trucking companies to distribute educational material to incentivize the reduction of non-critical idling (e.g., maintenance costs savings due to reduced wear and tear, and fuel cost savings)
- C. CARB to collaborate with South Coast AQMD to conduct quarterly enforcement sweeps, evaluate findings, seek input from CSC, and report back to CSC periodically
- D. Collaborate with the CSC to identify and prioritize “No Idling” sign placement in the SELA community. CARB to coordinate with South Coast AQMD, land-use agencies, school districts, and law enforcement agencies to install and enforce “No Idling” signs. Signs will include CARB and South Coast AQMD’s contact information and roles in enforcing heavy duty truck idling regulations.



# CERP ACTIONS TO ADDRESS TRUCKS AND FREEWAYS



## Goal: Reduce Emissions from Truck Traffic and Freeways (*continued*)

### Actions

- E. Continue to develop Warehouse Indirect Source Rule (ISR) to reduce emissions from large warehouses and fulfillment centers and inform CSC members about Warehouse ISR working group meetings and provide warehouse information to the CSC
- F. Outreach to small businesses (e.g., independent truck owners and operators) and local fleets for incentive funds, prioritizing zero emission trucks where commercially available (e.g., Class 6 or below).
- G. Conduct outreach to the SELA community to provide information to the community about battery electric, fuel cell, and hybrid options and incentives available to encourage replacement of older polluting light duty vehicles with cleaner vehicles, and work with partners to increase the availability of publicly accessible electric vehicle charging stations in the community

# CERP ACTIONS TO ADDRESS TRUCKS AND FREEWAYS



## Goal: Reduce Emissions from Truck Traffic and Freeways (*continued*)

### **Actions**

- H. Identify freeway projects (e.g., freeway expansion projects) within the community that are circulated to South Coast AQMD for review under the California Environmental Act (CEQA)
- I. Conduct air monitoring in the community to support implementation of truck emission reduction strategies and help track concentration trends of key indicator pollutants of truck emissions

# CERP ACTIONS TO ADDRESS TRUCKS AND FREEWAYS



## Goal: Reduce Catalytic Converter Theft in SELA

### Actions

J. CARB to pursue a catalytic converter theft deterrence and education program in SELA

## Goal: Reduce Exposure to Truck Emissions

### Actions

K. Work with local school districts, and CSC members to identify and prioritize schools exposed to truck emissions that may benefit from installation of air filtration systems

# CERP ACTIONS TO ADDRESS RAILYARDS AND LOCOMOTIVES



## Goal: Reduce Emissions from Railyards and Locomotives

### Actions

- A. Conduct air monitoring around railyards and in the community to assess how railyard related emissions may contribute to the overall air pollution burden in this community
- B. Use information collected from air monitoring and other sources of information to identify potential strategies to reduce emissions from railyards and the Alameda Corridor
- C. Continue to develop the Railyard Indirect Source Rule, which includes strategies such as addressing exposures from load testing and maintenance activities
- D. Through the development of the Railyard Indirect Source Rule and incentives, pursue the replacement of older diesel-fueled equipment at railyards with lowest emissions technology available (e.g., replace diesel-fueled yard trucks with lowest or zero-emission yard trucks and replace locomotives with lowest emission locomotives)

# CERP ACTIONS TO ADDRESS RAILYARDS AND LOCOMOTIVES



## Goal: Reduce Emissions from Railyards and Locomotives

### Actions

- E. CARB to present the Transport Refrigeration Unit (TRU) Regulation to their Board to begin the transition of TRUs to zero-emission technologies and require use of lower global warming potential refrigerants
- F. CARB to present a regulation to their Board to transition the drayage truck fleet to zero-emission technologies by 2035
- G. CARB to present a regulation to their Board for cleaner locomotive operations throughout the state
- H. CARB to present regulatory amendments to their Board for cleaner cargo handling equipment and facility infrastructure requirements at ports and railyards
- I. CARB to prioritize the SELA community for enforcement of the TRU Regulation with semi-annual inspections and report the compliance rate to CSC



# CERP ACTIONS TO ADDRESS RAILYARDS AND LOCOMOTIVES



## Goal: Reduce Emissions from Railyards and Locomotives

### Actions

- J. CARB to prioritize the SELA community for enforcement of the Cargo Handling Equipment (CHE) Regulation by conducting an annual audit for each railyard detailing:
- Total number of regulated pieces of equipment – both yard and non-yard trucks at each rail facility
  - Compliance rates for opacity and performance standards at each rail yard
- K. CARB, in coordination with South Coast AQMD, to conduct community outreach on locomotive idling regulations and how to file complaints

# CERP ACTIONS TO ADDRESS GREEN SPACES



## Goal: Increase Green Space in SELA

### Actions

- A. Collaborate with land-use, state and local agencies, and non-profit organizations to develop a list a low-VOC and drought tolerant trees
- B. Evaluate opportunities to use future settlement funds to support community green space projects
- C. Collaborate with nonprofits, local, and regional agencies to provide letters of support and air quality information for urban greening funding opportunities, including maintenance
- D. Work with CSC, state, and local agencies to identify and prioritize locations for installing vegetative buffers near freeways

# CERP ACTIONS TO ADDRESS RENDERING FACILITIES



## Goal: Reduce Odors from Rendering Facilities

### Actions

- A. Engage in community outreach and provide information on Rule 415 and how to file odor complaints
- B. Conduct air monitoring for VOCs and odorous compounds near each rendering facility and in the community to better characterize the emissions and to make data available to the public
- C. Continue complaint response including SELA complaint tracking, provide timely updates to complainants, continue Rule 415 compliance inspections, and provide an annual summary of findings to the CSC
- D. After the installation of the emissions controls (e.g., permanent total enclosures) required by Rule 415, work with the CSC to identify remaining odor concerns, evaluate the need for additional requirements to address odors, (e.g., conduct additional air monitoring for VOCs and odorous compounds) and establish a rule development schedule, if needed

## Goal: Reduce Exposure to Odors from Rendering Facilities

### Action

- E. Explore the development of an odor event notification system for schools and sensitive receptors.

# CERP ACTIONS TO ADDRESS GENERAL INDUSTRIAL FACILITIES



## Goal: Reduce Emissions From General Industrial Facilities

### Actions

- A. Develop an informational handout that describes the types of general industrial facilities within the emissions study area, sources of emissions at the facilities, and existing air monitoring efforts
- B. Work with the CSC to identify industrial facilities of concern within the SELA emissions study area, provide a list of South Coast AQMD rules applicable to the industrial facilities identified, provide a three (3) year compliance history of the facilities, summarize available emissions data and air monitoring data collected at or near facilities, and other sources of information
- C. Based on the information from Action B above, work with the CSC to prioritize emissions sources and identify potential air monitoring (conduct air monitoring, where feasible) or emissions and exposure reduction measures, if necessary
- D. Identify emissions and exposure reduction measures that require South Coast AQMD Governing Board action in the annual CERP progress report to the Board

# CERP ACTIONS TO ADDRESS METAL PROCESSING FACILITIES



## Goal: Reduce Emissions from Metal Processing Facilities

### Actions

- A. Conduct public outreach using plain language materials explaining various types of metal processing operations and rules that are currently regulating metal-related facilities

Conduct an informational workshop for the public regarding various types of metal processing facilities in their neighborhood highlighting current and future South Coast AQMD regulatory efforts

- B. Initiate rule development process to address housekeeping and best management practices at metal recycling plants to reduce fugitive emissions
- C. Work with the CSC and local land use agencies to identify all metal processing facilities within the SELA emissions study area provide a list of South Coast AQMD rules applicable to the metal processing facilities identified, provide a three (3) year compliance history of the facilities, summarize emissions data and air monitoring data collected at or near facilities, and other sources of information



# CERP ACTIONS TO ADDRESS METAL PROCESSING FACILITIES



## Goal: Reduce Emissions from Metal Processing Facilities

### Actions

- D. Based on the information from Action C above, work with the CSC to identify air quality issues related to metal processing facilities and work to prioritize them. Based on the prioritization of sources and their issues, identify potential strategies and approaches to address the issues.
- E. Conduct air monitoring to help identify elevated levels of air toxic metals and support efforts to identify potential sources of emissions
- F. Implement strategies and approaches based on the prioritization of sources and issues identified in Actions C and D
- G. Make referrals to the appropriate agencies when issues are found during inspections that fall outside of South Coast AQMD's jurisdiction (e.g., Water Board, DTSC, Cal-OSHA)
- H. Pursue collaborations with local land-use agencies to provide outreach information to metal processing facilities on required South Coast AQMD permits.

# DISCUSSION

COMMENTS AND QUESTIONS?

# NEXT STEPS

November 5<sup>th</sup>

## Comment Deadline

- Comments on the Discussion Draft CERP may be submitted until this date
- Comments from CSC meetings will also be considered

November 20<sup>th</sup>

## Stationary Source Cmt.

- Draft CERP will be presented to the South Coast AQMD Stationary Source Committee for initial review.
- The meeting is open to the public

December 4<sup>th</sup>

## Governing Board

- Draft CERP will be presented to the South Coast AQMD Governing Board for adoption
- The meeting is open to the public

# CAMP CONTENTS



SOUTHEAST LOS ANGELES CSC MEETING #8  
OCTOBER 29<sup>TH</sup>, 2020

PAYAM PAKBIN, Ph.D.  
PROGRAM SUPERVISOR



# CAMP TABLE OF CONTENTS

## Main Chapters

CAMP and Monitoring Objectives

Existing and Ongoing Monitoring Programs in SELA

Air Monitoring Equipment and Methods

General Community Air Monitoring Approach

Specific Air Monitoring Approach for Each AQ Priority

Data Reporting

- The Discussion Draft CAMP is available at:  
<https://www.aqmd.gov/nav/about/initiatives/community-efforts/environmental-justice/ab617-134/southeast-los-angeles>
- Please submit your comments on the Discussion Draft CAMP by 5:00 PM, Friday November 6<sup>th</sup>



# MONITORING STRATEGIES TO ADDRESS TRUCKS AND FREEWAYS



## Monitoring Strategy:

Recurring mobile monitoring to identify locations with persistent elevated levels of pollutants

Monitoring areas prioritized based on CSC input and traffic density

Monitoring to extend to other areas to support the implementation of CERP and help track concentration trends of key pollutants of truck emissions

## Pollutants to be Measured:

Black carbon (BC), particulate matter (PM), nitrogen dioxide (NO<sub>2</sub>)

# MONITORING STRATEGIES TO ADDRESS RAILYARDS AND LOCOMOTIVES



## Monitoring Strategy:

Monitoring in areas surrounding the railyards have been done as part of ELABHWC CAMP implementation\*

Recurring mobile monitoring to assess how railyards and railway emissions contribute to the overall pollution burden in SELA

Integrate monitoring and wind data to help identify the specific source of air pollution related to railyard operations

## Pollutants to be Measured:

BC, PM, NO<sub>2</sub>

\* ELABHWC railyard monitoring progress report available at:

<http://www.aqmd.gov/docs/default-source/ab-617-ab-134/camps/elabhwc-progress-reports/elabhwc-railyards---coming-soon.pdf?sfvrsn=12>

# MONITORING STRATEGIES TO ADDRESS METAL PROCESSING FACILITIES



## Monitoring Strategy:

Recurring mobile monitoring in areas prioritized based on the locations of the metal processing facilities to identify persistent elevated levels of air toxic metals

Mobile and stationary monitoring to support efforts to identify potential sources of emissions

Use monitoring data to help determine if additional actions are needed to address elevated levels

## Pollutants to be Measured:

Air toxic metals (e.g. lead, arsenic, chromium, nickel, hexavalent chromium)

# MONITORING STRATEGIES TO ADDRESS RENDERING FACILITIES



## Monitoring Strategy:

Monitoring in areas surrounding the rendering facilities have been done as part of ELABHWC CAMP implementation\*

Recurring mobile monitoring near all five rendering facilities to characterize emissions

Community monitoring to assess the extent to which emissions from rendering facilities impact the community

## Pollutants to be Measured:

Hundreds of volatile organic compounds (VOCs) and other odorous compounds

\* ELABHWC rendering facilities monitoring progress report available at:

<http://www.aqmd.gov/docs/default-source/ab-617-ab-134/camps/elabhwc-progress-reports/elabhwc-rendering-facilities---coming-soon.pdf?sfvrsn=18>

# MONITORING STRATEGIES TO ADDRESS GENERAL INDUSTRIAL FACILITIES



## Monitoring Strategy:

Work with the CSC to determine the types of industries and emissions located in the community

Based on the types of industries, identify target air pollutants

Work with the CSC to determine the monitoring objectives

Use this information to recommend appropriate monitoring methods and a targeted monitoring strategy to address this concern

## Pollutants to be Measured:

Can vary depending on the types of industries. May include VOCs, metals, odors



# DISCUSSION

COMMENTS AND QUESTIONS?

# AB 617 – 2020 COMMUNITY STEERING COMMITTEE SCHEDULE (SELA)

January 9, 2020	<b>Community Kick-off Meeting</b> Salt Lake Park (Huntington Park) 6:00 – 8:30 pm	August 27, 2020	<b>Workshop and Community Steering Committee Meeting</b> Virtual Meeting 4:00 – 6:00 pm
February 6, 2020	<b>Community Steering Committee Meeting</b> Ross Hall at Veterans Park (Bell Gardens) 6:00 – 8:30 pm	September 17, 2020	<b>Workshop and Community Steering Committee Meeting</b> Virtual Meeting 4:00 – 6:00 pm
March 12, 2020 and April 9, 2020	<b>Community Steering Committee Meetings –</b> <b>Postponed</b>	October 8, 2020	<b>Community Steering Committee Meeting</b> Virtual Meeting 4:00 – 6:00 pm
May 7, 2020	<b>Community Steering Committee Meeting</b> Virtual Meeting 4:00 – 6:00 pm	October 29, 2020	<b>Community Steering Committee Meeting</b> Virtual Meeting 4:00 – 6:00 pm (NEWLY ADDED)
June 11, 2020	<b>Community Steering Committee Meeting</b> Virtual Meeting 4:00 – 6:00 pm	November 5, 2020	<b>Community Steering Committee Meeting</b> Virtual Meeting 4:00 – 6:00 pm
July 23, 2020	<b>Workshop and Community Steering Committee Meeting</b> Virtual Meeting 4:00 – 6:00 pm		