

AQ-SPEC

Air Quality Sensor Performance Evaluation Center

Sensor Description

Manufacturer/Model:
IQAir AirVisual Pro

Pollutants:

PM_{2.5}

PM₁₀

CO₂

VOC

Type: Optical

Time Resolution: 10 second



Additional Information

Field evaluation report:

<http://www.aqmd.gov/aq-spec/evaluations/field>

Lab evaluation report:

<http://www.aqmd.gov/aq-spec/evaluations/laboratory>

AQ-SPEC website:

<http://www.aqmd.gov/aq-spec>

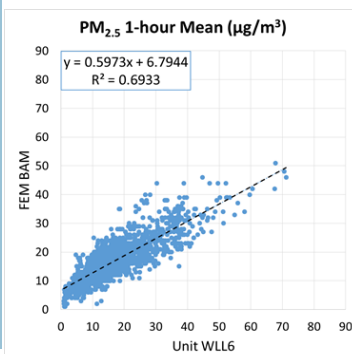
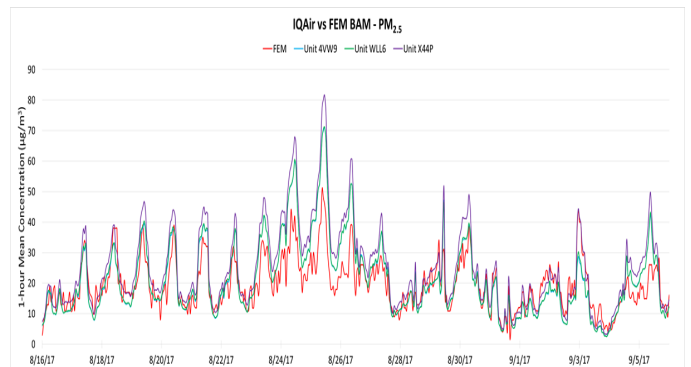
Evaluation Summary

- Overall, the three IQAir AirVisual Pro sensors showed low accuracy. They overestimated the FEM GRIMM PM_{2.5} measurements for a concentration range between 0 to 250 µg/m³.
- The three IQAir AirVisual Pro sensors exhibited high precision for all T/RH combinations tested in the environmental chamber.
- IQAir AirVisual Pro sensors (units IDs: 4VW9, WLL6, X44P) showed low intra-model variability in the field deployment as well as in the laboratory testing.
- IQAir AirVisual Pro sensors had good data recovery (>98% for 5-min average in the field, and 100% for 1-min average in the laboratory).
- For PM_{2.5}, the IQAir AirVisual Pro sensors showed strong correlations with the reference instrument from the field ($R^2 \sim 0.70$) and very strong correlations with laboratory studies ($R^2 > 0.99$).

Field Evaluation Highlights

- Deployment period 08/02/2017– 10/05/2017: the three IQAir AirVisual Pro sensors (units IDs: 4VW9, WLL6, X44P) showed strong correlations with PM_{2.5} concentration change as monitored by FEM BAM.
- The units showed > 98% data recovery as well as low intra-model variability.

$R^2 \sim 0.70$



Coefficient of Determination (R^2) quantifies how the three sensors followed the PM concentration change by the reference instruments.

An R^2 approaching the value of 1 reflects a near perfect agreement, whereas a value of 0 indicates a complete lack of correlation.

Laboratory Evaluation Highlights

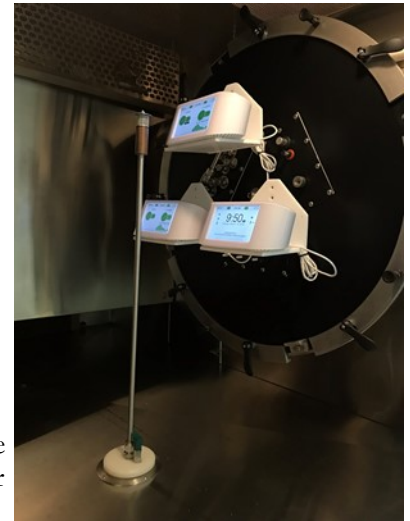
Accuracy (PM_{2.5})

$$A (\%) = 100 - \frac{|\bar{X}-R|}{R} * 100$$

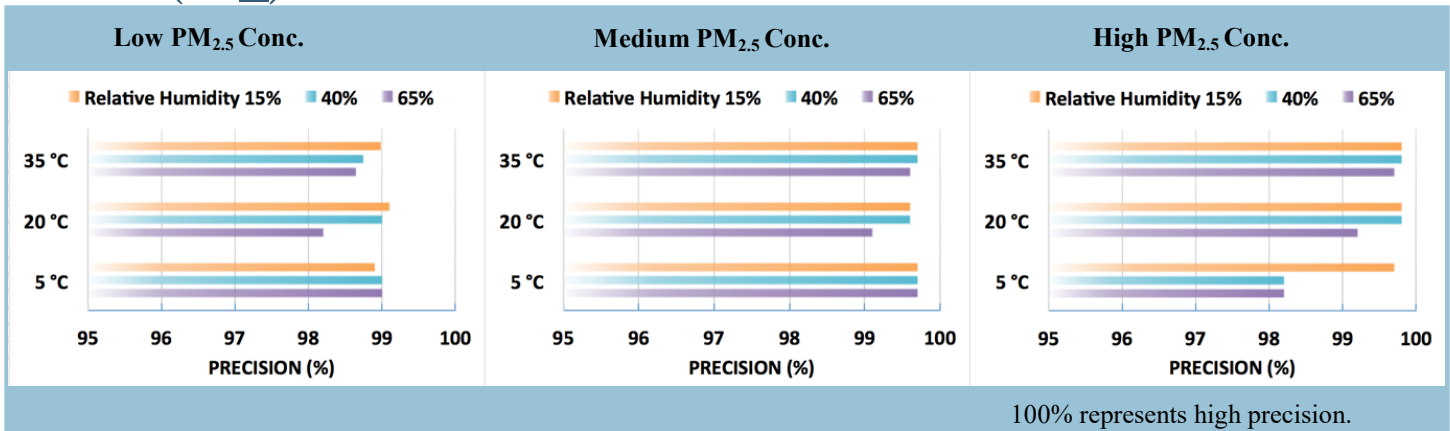
Steady State (#)	Sensor mean (µg/m ³)	GRIMM (µg/m ³)	Accuracy (%)
1	21.3	10.9	5.2
2	69.0	33.5	-6.2
3	154.6	79.3	5.0
4	288.6	153.0	11.4
5	440.0	228.5	7.4

Accuracy was evaluated in a concentration ramping experiment at 20 °C and 40%. The sensor's readings at each ramping steady state condition are compared to those from the reference instrument.

Negative % means sensors' overestimation by more than two fold. The higher the positive value (close to 100%), the higher the sensor's accuracy.

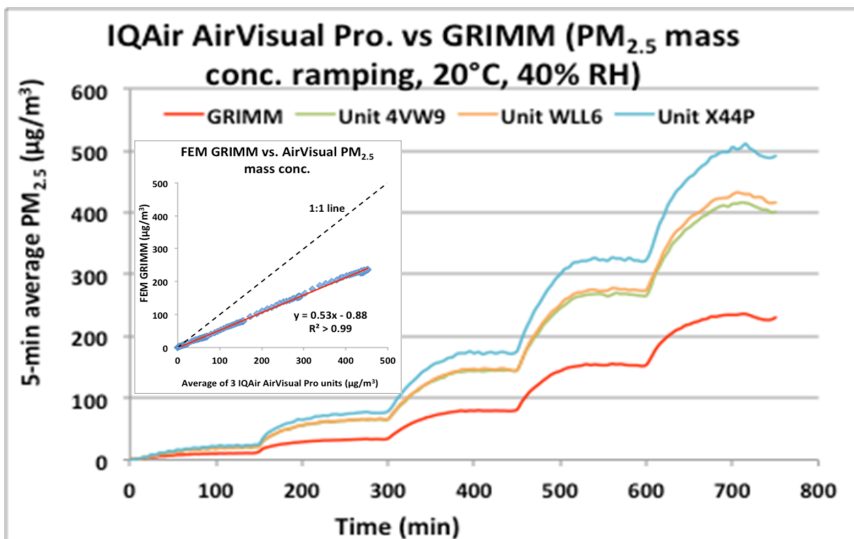


Precision (PM_{2.5})



Sensor's ability at generating precise measurements of PM concentration at low, medium, and high pollutant levels were evaluated under 9 combinations of T and RH, including extreme weather conditions like cold and dry (5 °C and 15%), cold and humid (5 °C and 65%), hot and humid (35 °C and 65%), or hot and dry (35 °C and 15%).

Coefficient of Determination



The three IQAir AirVisual Pro sensors showed very strong correlations with the corresponding FEM PM_{2.5} data ($R^2 > 0.99$) at 20 °C and 40% RH.

Climate Susceptibility

From the laboratory studies, temperature and relative humidity had minimal effect on the IQAir AirVisual Pro sensors' precision. At the set-points of RH changes, IQAir AirVisual Pro reported spiked changes in concentrations.

Observed Interferents

N/A



All documents, reports, data, and other information provided in this document are for informational use only. Mention of trade names or commercial products does not constitute endorsement or recommendation. The South Coast AQMD's AQ-SPEC program, as a government agency, recommends the interested parties to make purchase decisions based on their application.