



**CONEJO**  
**ARCHAEOLOGICAL**  
**CONSULTANTS**

2321 Goldsmith Avenue  
Thousand Oaks, California 91360  
805/494-4309  
Email: mmaki@adelphia.net

September 16, 2005

Mr. Arrie Bachrach  
ENSR  
1220 Avenida Acaso  
Camarillo, CA 93012

**Subject: Records Search Results for the Chevron El Segundo Refinery, El Segundo, Los Angeles County**

Dear Mr. Bachrach:

Per your request, a records search was conducted at the South Central Coastal Information Center (SCCIC) for the Chevron El Segundo Refinery (Refinery) on August 11, 2005 (Figure 1). The SCCIC record search entailed a review of all recorded archaeological sites and survey reports within a 0.5-mile radius of the Refinery. Federal, state and local historic listings were also reviewed along with historic maps. In addition, background research was supplemented by an internet search for historic information on the Refinery. The background research findings are summarized below along with recommendations.

Archaeological Sites

No prehistoric sites are recorded within a 0.5-mile radius of the Refinery.

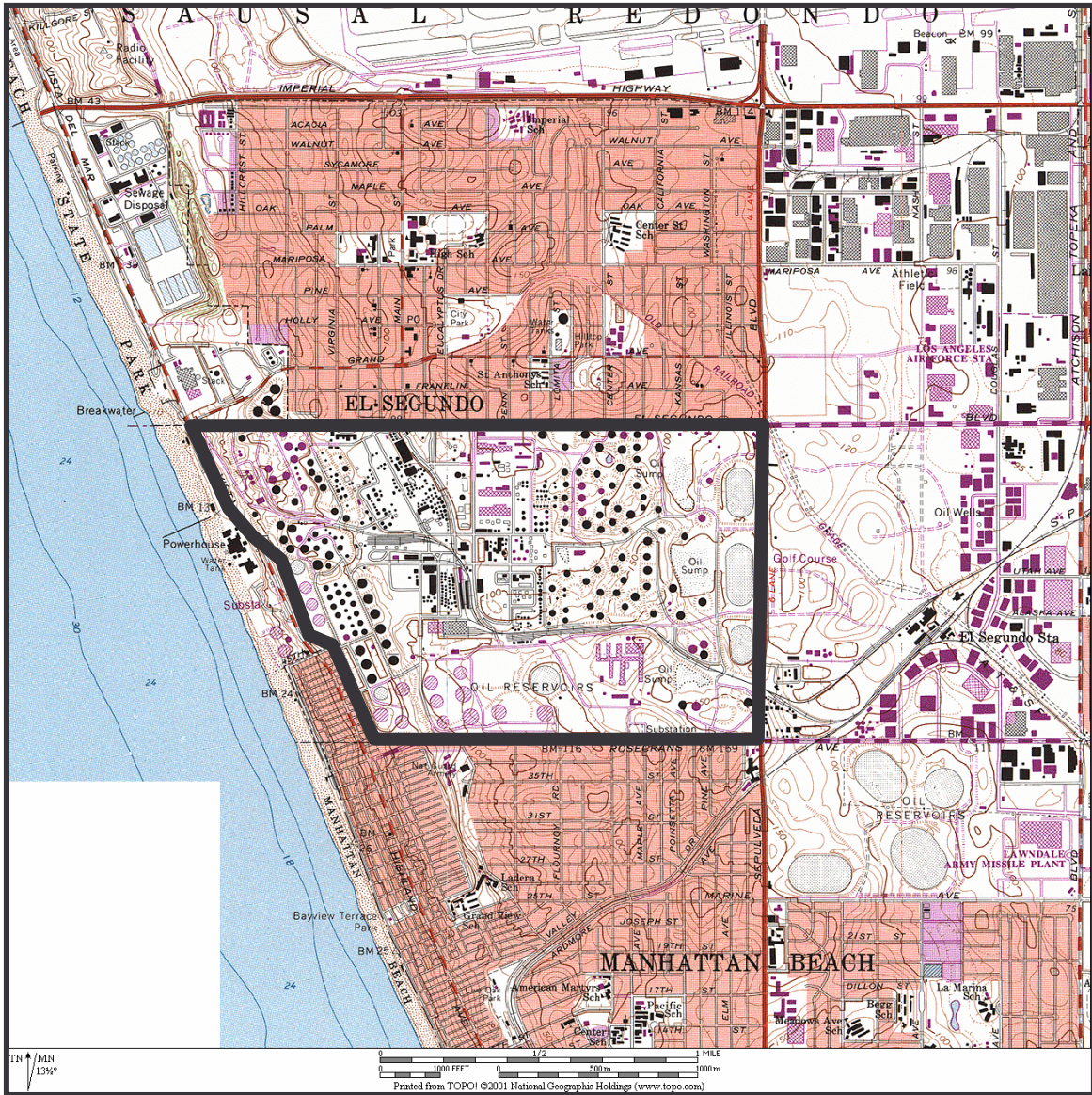
One historic site, P-186856, is recorded at the outer edge of the 0.5-mile radius. Site P-186856 would not be directly or indirectly impacted by any work within the Refinery.

Archaeological Investigations

Fourteen archaeological investigations are recorded within a 0.5-mile radius of the Refinery. Three of these investigations included small linear areas within the Refinery as described below:

Peak and Associates (1992) surveyed the eastern half of the SPRR corridor within the Refinery for the Pacific Pipeline Project.

JRP Historical Consulting Services evaluation of the built environment for the El Segundo Power Redevelopment Project included a linear area along the SPRR tracks within the western third of the Refinery (Brunse 2000).



Source: USGS 7.5' Venice Quadrangle, 1964, photo-revised 1981

## CHEVRON EL SEGUNDO REFINERY LOCATION EL SEGUNDO, LOS ANGELES COUNTY

Figure 1

URS Corporation cultural resources survey for the El Segundo Power Redevelopment Project also included a linear area along the SPRR tracks within the western third of the Refinery (Wesson et. al 2000).

The SCCIC records indicate that *less than five percent* of the Refinery has been subject to archaeological reconnaissance.

#### Historic Maps

The 1924 15' USGS Venice Quadrangle shows the Standard Oil Company Refinery in its current location. Several building, tanks and some reservoirs are present within the Refinery. Railroad tracks cross the subject property in a west to east direction.

The 1934 (reprinted 1942) 15' USGS Venice Quadrangle includes more tanks than the 1924 quadrangle, including six in a previously undeveloped area in the southwestern portion of the Refinery. The number and layout of buildings appears approximately the same as on the 1924 quadrangle.

The 1964 7.5' USGS Venice Quadrangle plots several more tanks and oil sumps than the previous quadrangles.

The 1981 7.5' USGS Venice Quadrangle shows the entire Refinery as developed with numerous new buildings and tanks..

#### Federal, State, County and City Historic Listings

The listings of the National Register of Historic Places (NRHP) (National Park Service 2005), California Historical Landmarks (Office of Historic Preservation 2005a), California State Historic Resources Inventory (Office of Historic Preservation 2005b), California Points of Historical Interest (Office of Historic Preservation 1992), and Los Angeles County Landmarks include no properties within the Refinery.

#### Native American Heritage Commission Consultation

A Native American Heritage Commission file check on December 13, 2000 did not identify any sacred lands within the immediate vicinity of the Refinery (Maki 2000).

#### Historic Overview of the Chevron El Segundo Refinery

Although there are no historic resources recorded within the Refinery, the facility is over 90 years old and was instrumental in the founding of the City of El Segundo. The following brief synopsis of the Refinery's history is based on information provided on the City of El Segundo's (2005) website.

The Refinery is located within the historic boundaries of the approximate 25,000 acre *Rancho Sausal Redondo* (Ranch of the Round Clump of Willows). In 1911, Standard Oil Company sent a team of five men to the Los Angeles area to scout out a location for an oil refinery. The team chose the current Refinery location for three primary reasons. First, it was adjacent to the seashore, which was necessary for tanker access. Second, the land was undeveloped, which kept costs down. Finally, the location was near enough a population center to provide them with the necessary workforce.

The Standard Oil Company bought 840 acres in June 1911. The Refinery was named El Segundo (the second one), as the site was to be the company's second oil refinery in California. The refinery opened for business in November 1911. Less than six years later the City of El Segundo incorporated in January 1917.

### Summary & Recommendations

#### *Prehistoric Resources*

There are no recorded prehistoric sites or Native American sacred lands within the Refinery, but less than five percent of the Refinery has been subject to archaeological reconnaissance. Over the past 90+ years there has been extensive ground disturbance associated with the construction, operation and expansion of the Refinery. The extent of previous earth disturbance has reduced the likelihood of intact significant prehistoric deposits occurring upon the ground surface within the Refinery. However, it is possible that intact prehistoric deposits may occur below the disturbed horizon. Therefore the following recommendation is made to mitigate any potential significant impacts to prehistoric resources:

1. An archaeologist should be retained to monitor any ground disturbance that extends into previously undisturbed soils.
  - a. The archaeologist shall have the authority to temporarily halt or redirect project construction in the event that potentially significant cultural resources are exposed. Based on monitoring observations and the actual extent of project disturbance, the lead archaeologist shall have the authority to refine the monitoring requirements as appropriate (i.e., change to spot checks, reduce or increase the area to be monitored) in consultation with the lead agency.

*Historic Resources*

There are no recorded historical archaeological sites or historic structures within the Refinery, but then there has been no formal historic evaluation of the facility either. Historic data indicates that the property was first developed by the Standard Oil Company as an oil refinery in 1911. The Refinery has evidently been in continuous operation since then. As the development of the Refinery led directly to the establishment of the City of El Segundo and has had a major impact on the region's economy, it is assumed for the purposes of this investigation that the Refinery may have some potential historical significance. Therefore, the following recommendation is made to mitigate any potential significant impacts to historic resources:

2. A historical assessment of any 50+ year old buildings, equipment, tanks, features, etc. that would be significantly modified or demolished by the proposed project should be conducted prior to project implementation.

Please call if you have any questions about the findings or recommendations. Thank you for using Conejo Archaeological Consultants for your cultural resource management needs.

Sincerely,



Mary K. Maki, M.A., RPA  
Principal Investigator

## Sources Cited

### Brunse, Meta

- 2000 El Segundo Power Redevelopment Project Historic Resources (Built Environment), Appendix K of Application for Certification. On file at the South Central Coastal Information Center, CSU Fullerton, IC ID #6240.

### El Segundo, City

- 2005 History of El Segundo. <http://www.elsegundo.org/working/history/default.asp>.

### Maki, Mary

- 2000 Record Search Results for the Chevron CARB Phase 3 Project. Letter to Christine Mount dated December 17, 2000.

### National Park Service

- 2005 National Register Information System, [http://www.nr.nps.gov/iwisapi/explorer.dll?IWS\\_SCHEMA=NRIS1&IWS\\_LOGIN=1&IWS\\_REPORT=100000066](http://www.nr.nps.gov/iwisapi/explorer.dll?IWS_SCHEMA=NRIS1&IWS_LOGIN=1&IWS_REPORT=100000066)

### Office of Historic Preservation

- 2005a Landmarks, Los Angeles County Listing, [http://www.ohp.parks.ca.gov/?page\\_id=21427](http://www.ohp.parks.ca.gov/?page_id=21427), Department of Parks and Recreation, Sacramento, California.
- 2005b, Directory of Properties in the Historic Property Data File for El Segundo, March 3, 2005. Department of Parks and Recreation, Sacramento, California.
- 1992 *California Points of Historical Interest*. Department of Parks and Recreation, Sacramento, California.

### Peak and Associates

- 1992 Consolidated Report: Cultural Resource Studies for the Proposed Pacific Pipeline Project. On file at the South Central Coastal Information Center, CSU Fullerton, IC ID #2950.

### Wesson, Alex, Bryon Bass and Brian Hatoff

- 2000 El Segundo Power Redevelopment Project cultural Resources (Archaeological Resources) Appendix J of Application for Certification. On file at the South Central Coastal Information Center, CSU Fullerton, IC ID #6239.