

# Boyle Heights Clean Communities Pilot Project

*Working Together to  
Build Cleaner Communities*

**March 20, 2012**



# Boyle Heights Work Plan Structure



# Update on Technology, Funding, Projects, and Showcase

---



Technology,  
Funding,  
Projects,  
and  
Showcase

- Boiler Retrofits
  - Currently working with L.A. County USC Medical for two boiler retrofits
  - Seeking additional candidates
- Possible Additional Yard Equipment Exchanges
  - Additional lawn mower and leaf blower exchanges planned
  - Pending EPA approval

# Update on Technology, Funding, Projects, and Showcase

---



Technology,  
Funding,  
Projects,  
and  
Showcase

- December 2011 AQMD approved 3 new VOC programs for Boyle Heights area
  - Green Cleaner Program
  - Super-Compliant Paint Program
  - Vehicle Repair Shop Brake Cleaning Program
- All VOC programs available for participation by qualifying candidates

# Update on Technology, Funding, Projects, and Showcase



Technology,  
Funding,  
Projects,  
and  
Showcase

- Diesel Truck Replacement Project
  - February 23, 2012 - AQMD and EPA announced completion of diesel truck replacement project with Ace Beverage
  - Replaced 25 older diesel trucks with new and cleaner diesel trucks
  - Will reduce ~750 lbs of NOx and DPM over 4 years
  - Grant funding of \$1.5M from AQMD in partnership with EPA



# Update on Technology, Funding, Projects, and Showcase



Technology,  
Funding,  
Projects,  
and  
Showcase

- Air filtration systems installations scheduled at LAUSD schools
  - Sunrise Elementary School (March 12-21)
  - Second Street Elementary School (March 22-April 3)
  - Soto Street Elementary (April 4-11)
- Working on agreement with Archdiocese



# Process of Identifying Potential Study Issues

---

- List of potential study issues from input from Working Group and interviews
- Input needed to ensure issues are appropriately characterized
- Identified initial list of potential actions, more to be identified through the process
- AQMD staff studying Boyle Heights area
- Bus Tour
- Prioritize study issues





# Boyle Heights

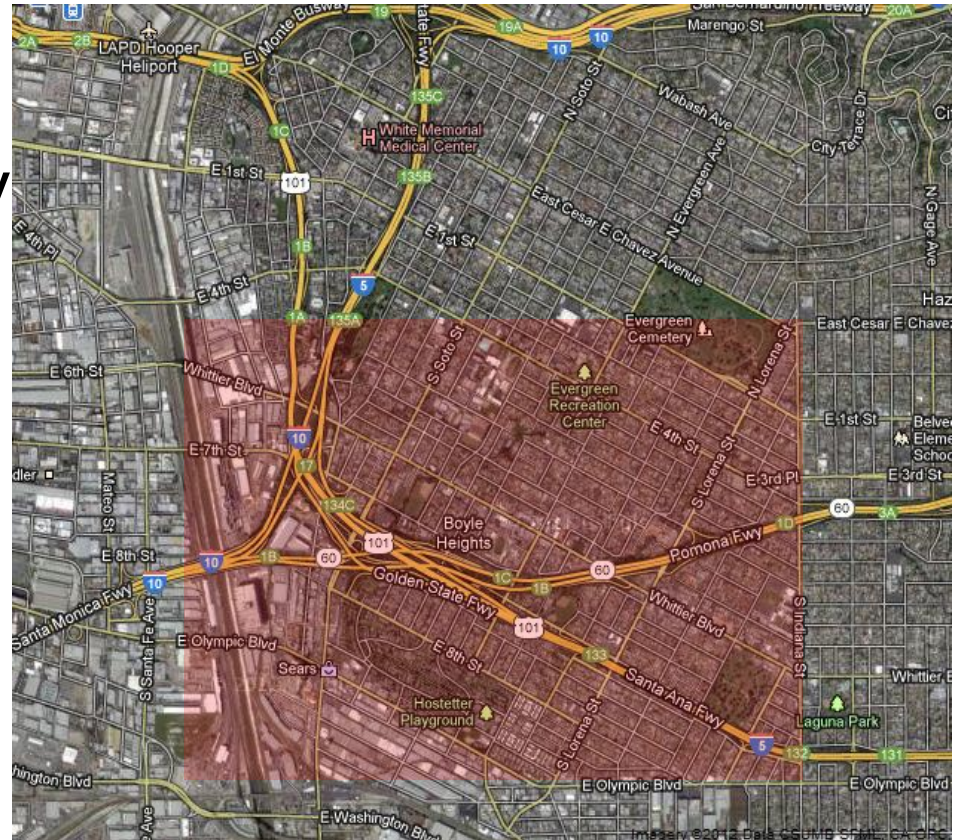


- One of the oldest communities in Los Angeles
- Originally Jewish and Japanese immigrants
- Today primarily Latino community
- Rich and unique cultural history
- Improvements
  - Schools
  - Police station
  - Mariachi Plaza Station (Metro Gold Line)



# Areas in Video

- Southern portion of Boyle Heights
- South of 10 Freeway
- South of 5 Freeway



# Areas in Video

- Alley - Between Hunter and Olympic Blvd
- Businesses on Olympic Blvd. and Whittier Blvd.





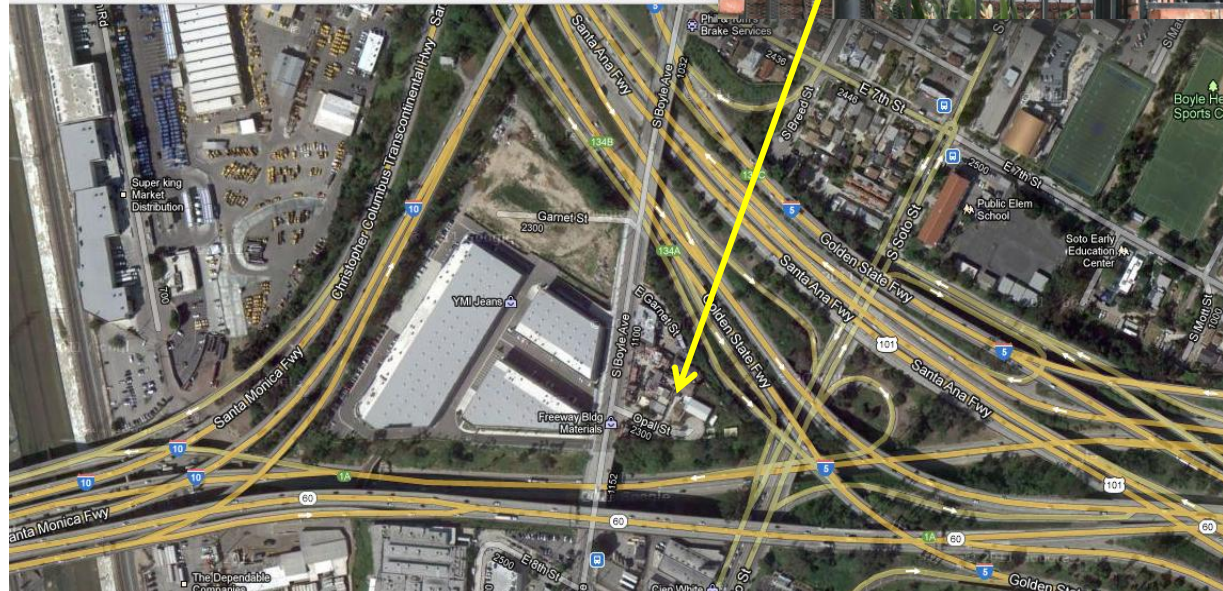
# Areas in Video

- DHE Trucking west of senior and public housing on Boyle
- Public housing
  - Wyvernwood Gardens
  - Estrada Court



# Areas in Video

- Home – between 10, 5, 60 and 101 Freeways





# Areas in Video

- Rendering facilities on Bandini
- Plating shop on Sunol



# Potential Study Issues

---

- Clean Up Green Up Pilot Initiative
- Green Zones Policy Concept
- Emissions from Trucks In and Around Community
- Rendering Facility Odors
- Proximity to Freeways and Roadways
- Facility Clusters near Sensitive Receptors
- Unpermitted Facilities



# Clean Up Green Up Pilot Initiative

---

- Concepts presented by Union de Vecinos at January CCP meeting
  - Create “Green Zones” in Boyle Heights
  - Performance standards for certain new industries
    - ❖ Limitations on truck deliveries to businesses
    - ❖ Limitations on noise, lighting
- Possible Actions
  - Find ways for AQMD to partner with Union de Vecinos to support common goals



# Green Zones Policy Concept

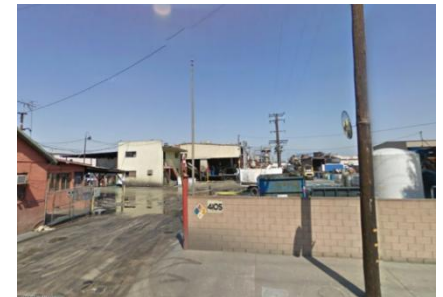
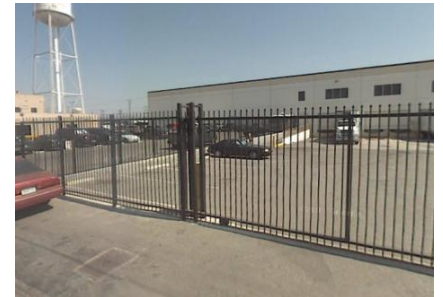
---

- Presented by East Yard Communities at January CCP meeting
  - Designate geographic buffer zones between industrial and residential areas (Green Zones)
  - Restrict new toxic uses in Green Zones
    - ❖ Attract new “Green” businesses to these zones
- Possible Actions
  - Find ways for AQMD to partner with East Yard Communities to support common goals

# Rendering Facility Odors

---

- Four rendering facilities
  - Baker Commodities
  - Darling International
  - Clougherty Packing/Farmer John
  - West Coast Rendering/D & D Services
- ~350 odor complaints in 10 years
  - Most from addresses in Boyle Heights
  - Not all verified
  - Multiple complaints from same address
- Possible Actions
  - Identify and implement measures to reduce odors



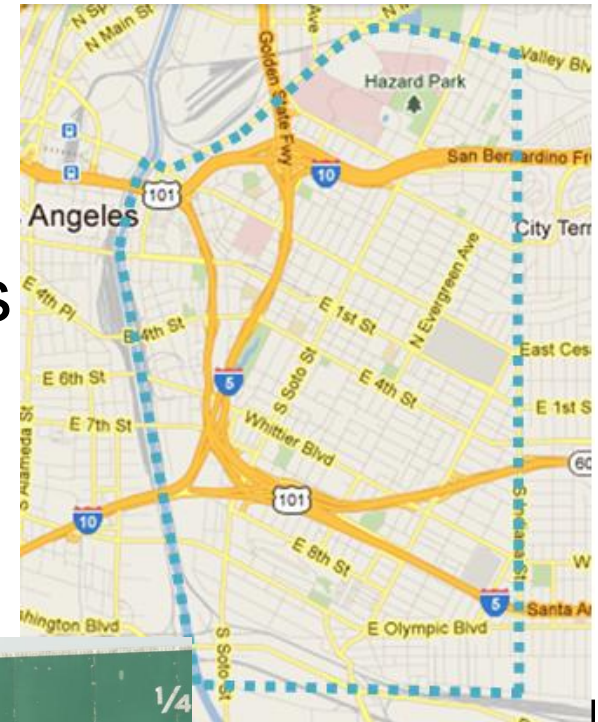
# Emissions from Trucks In and Around Community

- Local business delivery
- Goods movement activities
- Possible Actions
  - Identify strategies to reduce DPM emissions from these sources
  - Look at existing truck routes
  - Evaluate need for truck routes



# Proximity to Freeways and Roadways

- Four major freeways
- Diesel trucks on freeways/roads
- Health effects in community from exposure to DPM emissions
- Possible Actions
  - Identify strategies to reduce exposure to DPM emissions
  - Land use guidance



# Facility Clusters Near Sensitive Receptors

- Industrial and commercial facilities located near residences, schools, sensitive receptors
  - Auto body shops
  - Auto repair shops
  - Metal plating
  - Furniture stripping
- Toxics emissions may impact nearby
- Possible Actions
  - Identify all businesses in Boyle Heights
  - Identify strategies to reduce exposure to nearby sensitive receptors





# Unpermitted Facilities

---

- Compete with businesses that are in compliance with pollution requirements and hold permits
- Generally operate without pollution controls
- Uncontrolled or improperly controlled emissions may impact neighbors
- Possible Actions
  - Identify unpermitted businesses in Boyle Heights
    - ❖ Conduct “no-fault” inspections
  - Identify strategies to bring unpermitted businesses into regulatory compliance

# Next Steps

---

- Bus Tour
  - May 2012
    - ❖ In lieu of Working Group Meeting
    - ❖ Morning
- Next scheduled meeting at Salesian:
  - ❖ July 17, 2012
  - 3:30 PM to 5:30 PM
  - Salesian High School