



Electric Vehicle and Infrastructure Demonstration



Alfonso Baez

Technology Advancement Office



Welcome to the
CITY OF INDUSTRY



2MW solar PV carport
28 Level-2 EV
chargers
28 Nissan Leaf EVs
for lease car-sharing
program

Metrolink
train station



Objective

2MW solar
PV carport
system

20-year power
purchase
agreement
with Southern
California
Edison

28 Level-2 EV
chargers
installed at
premium
parking
locations

28 Nissan Leafs to
implement an EV
Commuter
Rent/Lease
Program to
encourage the use
and experience of
EVs by the general
public

2MW Solar PV Carport

On-line mid 2012



Performance

3,100,000
annual
kW-hours

Efficiency

- 12.1% Array DC
- 11.6% Inverter AC
- 11.5% System AC

1,827
kWh/m²
Global
Horizontal
Irradiance

0.79
Performance
Ratio

Panels
cleaned
twice/year

Support EV charging stations

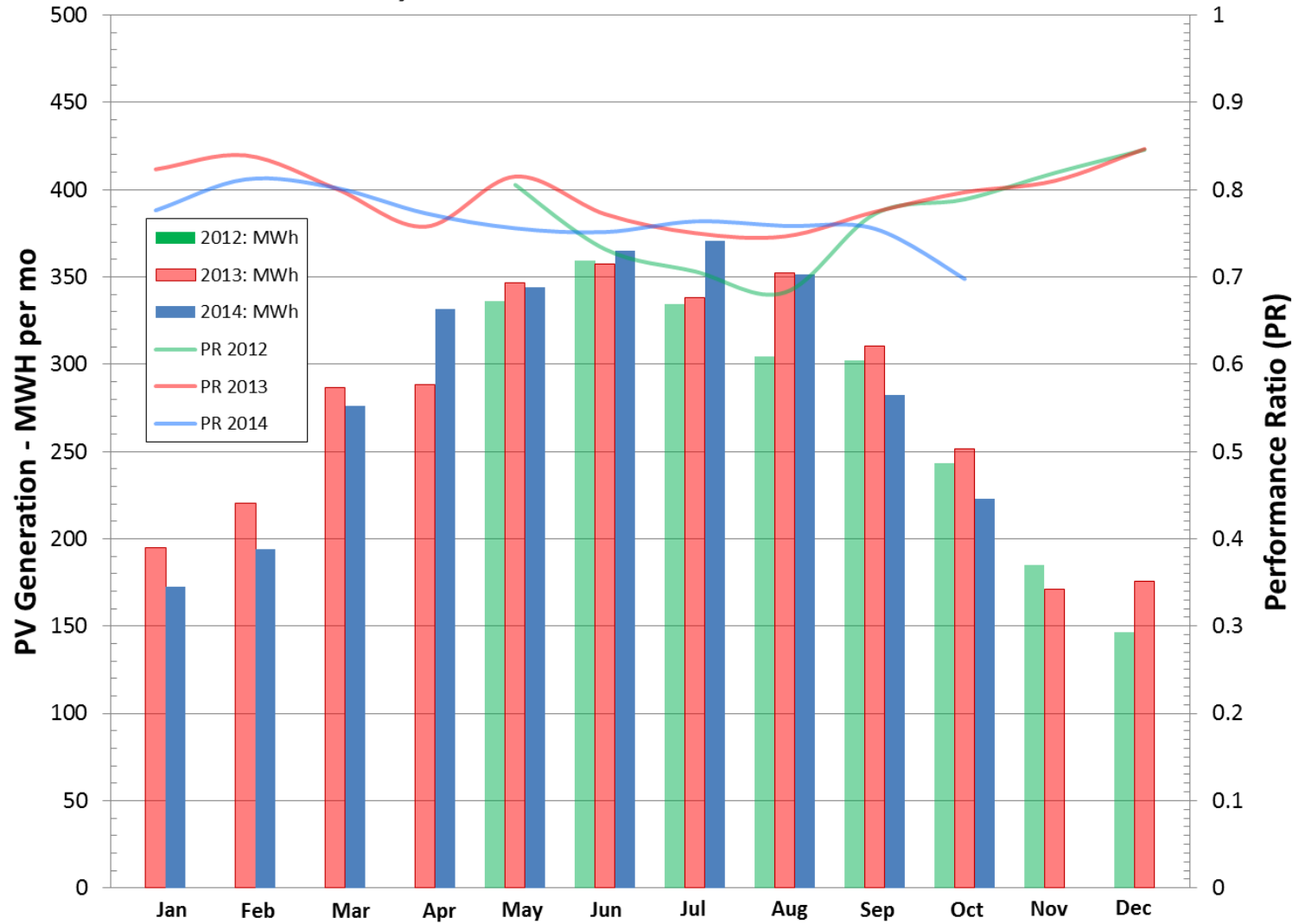
Displaced Emissions

Annual average in tons				
NOx	VOC	PM	CO	CO2
1.9	0.25	0.23	0.66	1,168

Displaced criteria pollutant & GHG emissions are emissions avoided based on SCE's Power Content



Industry MetroLink PV Performance - 2012 to 2014



EV Charging Stations





28 Level-2 chargers at premium parking locations
with a total of 60 EV chargers at facility



City of Industry MetroLink Station
600 S. Brea Canyon Road
City of Industry, CA



 Platform EV Parking
 Surplus EV Parking

EV Commuter Rent/Lease Program

- Promote EV usage through innovative rent/lease of 28 EVs (Nissan Leafs)
- Expanded to 60 EVs at same level of funding
- 2-year program
- City partnered with established rental car agency
- 1/3/6 month rental, 1 year and 2 year lease options



EV Commuter Rent/Lease Program

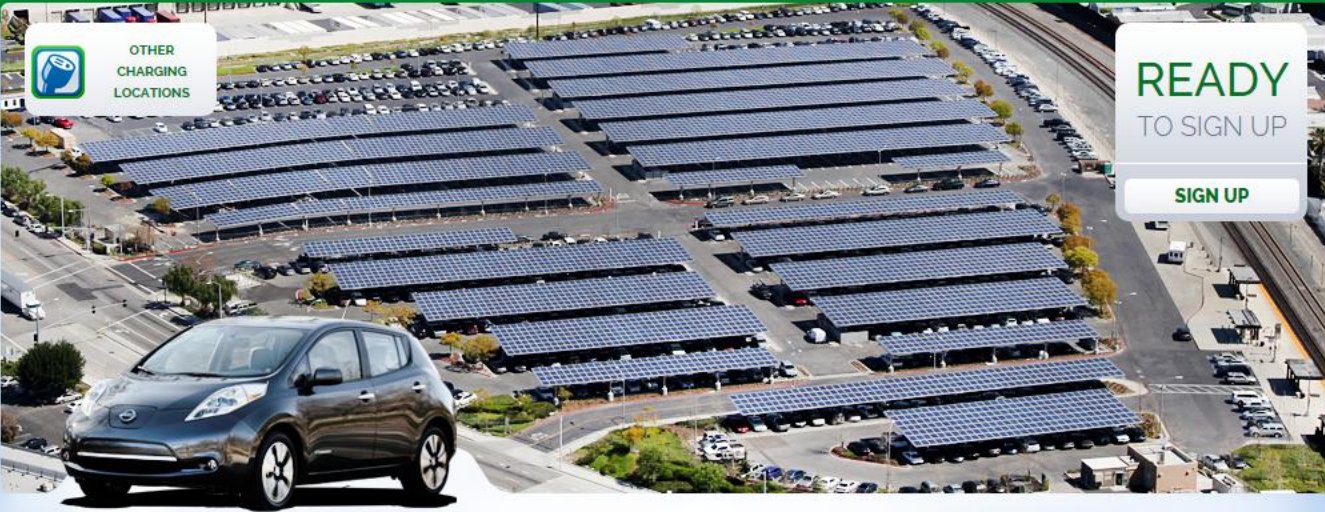
- Register on-line
- Participants selected through lottery
- Lease month cost \$290 minus program rebate of \$125
- Free charging/ monthly reporting feedback
 - Mileage
 - Charging times & where
 - Maintenance & Repair
 - Overall experience





Member Sign In

- Register
- EV Program
- What's available
- Rates & Plans
- How Rebate Works



OTHER CHARGING LOCATIONS

READY TO SIGN UP

SIGN UP

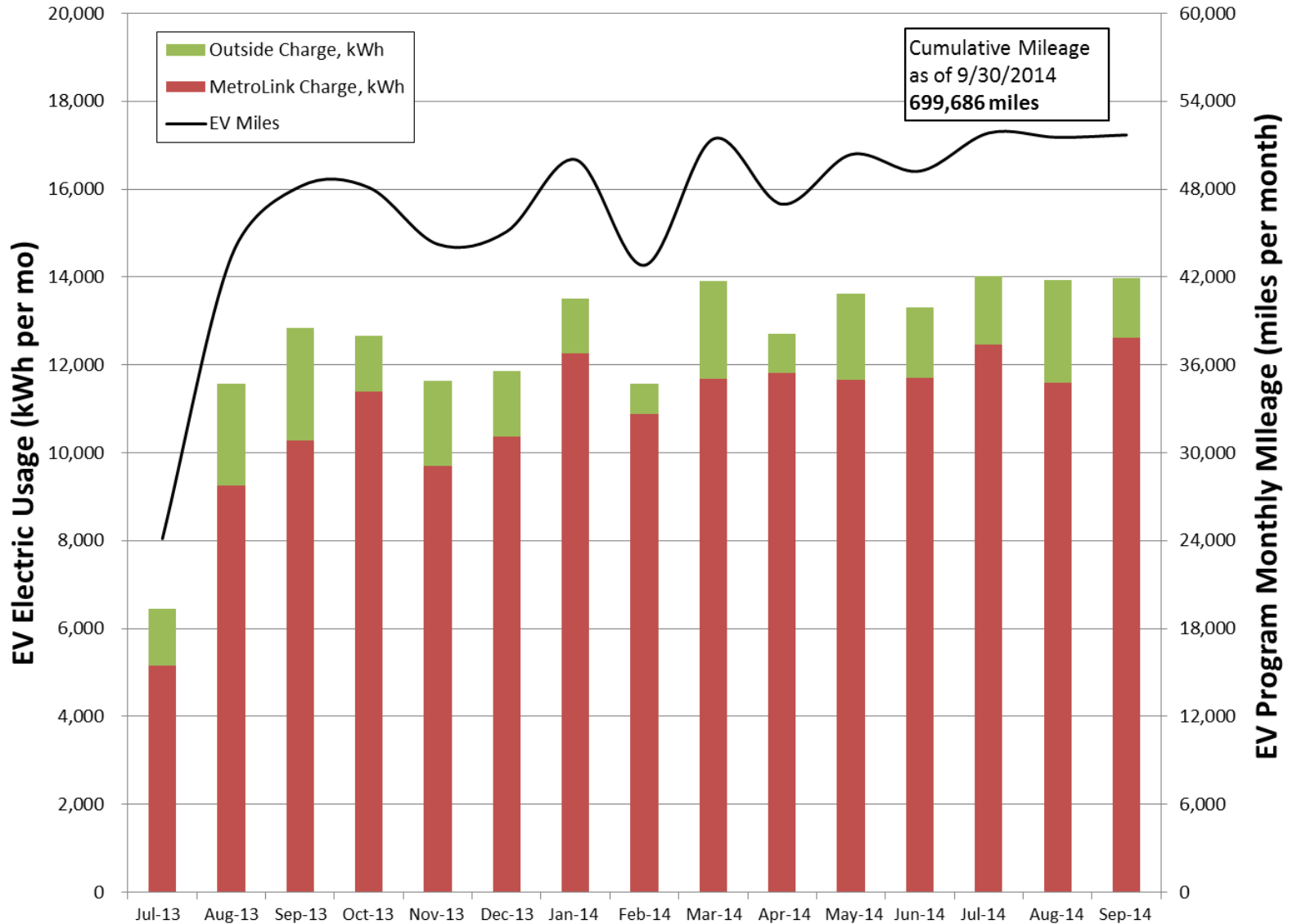
ELECTRIC VEHICLE PROGRAM

provides Industry MetroLink commuters reserved parking w/ EV fast charger and subsidies to lease or rent an electric vehicle (EV). Save money & time while helping to clean So Cal's air!

EV MILES DRIVEN & AIR QUALITY IMPROVED

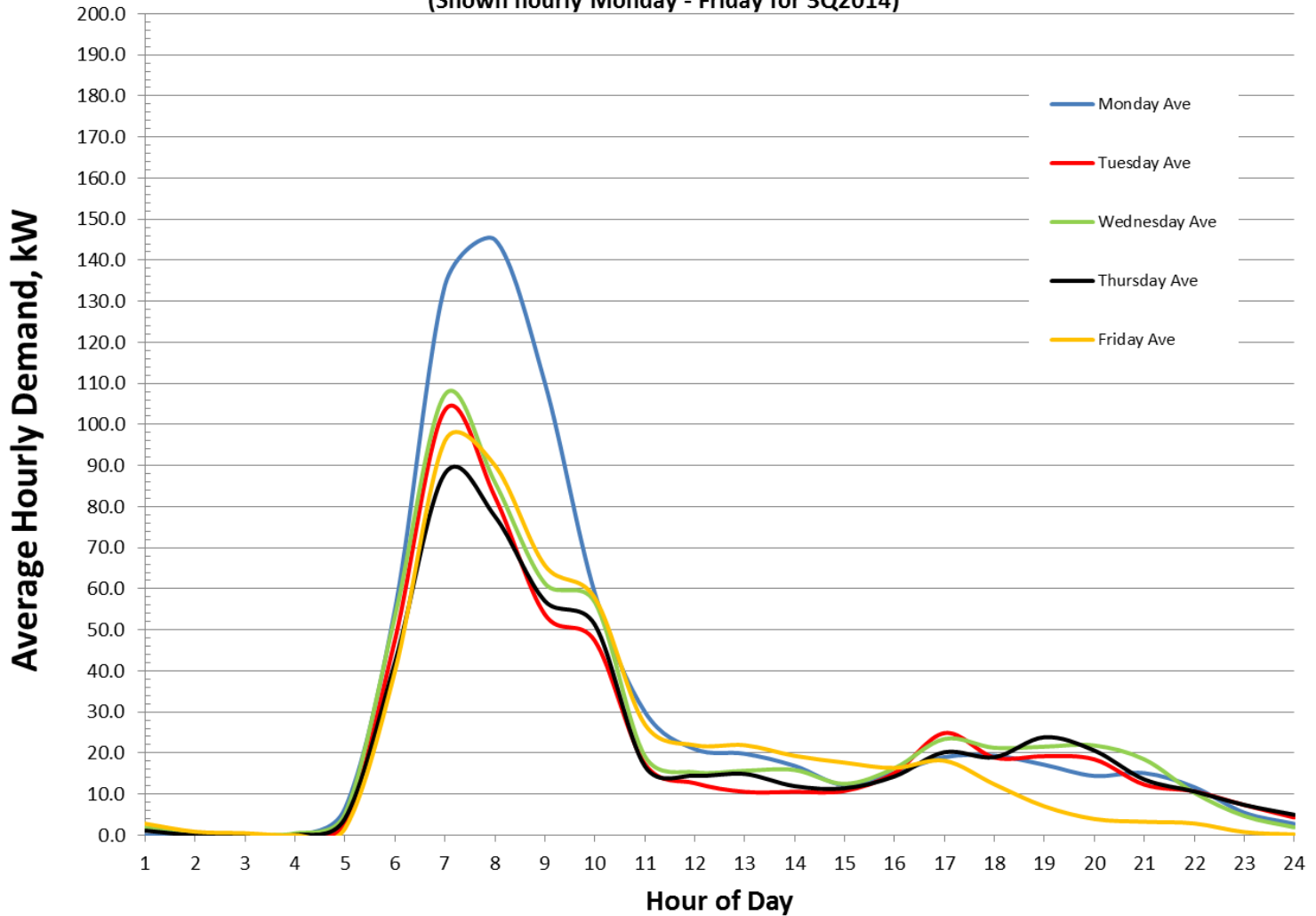
[CLICK FOR PROGRAM TOTAL](#)

Industry MetroLink EV Program Mileage & Charge



METROLINK EV AVERAGE HOURLY CHARGING DEMAND

(Shown hourly Monday - Friday for 3Q2014)



Displaced Emissions

3 Qtr 2013 – 3 Qtr 2014

NOx (lbs)	VOC (lbs)	PM (lbs)	CO (lbs)	CO ₂ (tons)
272	359	31	3271	264

Displaced criteria pollutant & GHG emissions are emissions avoided based on CARB EMFAC2011 Emissions Inventory from calendar year 2013 for equivalent vehicle class.



QUESTIONS

